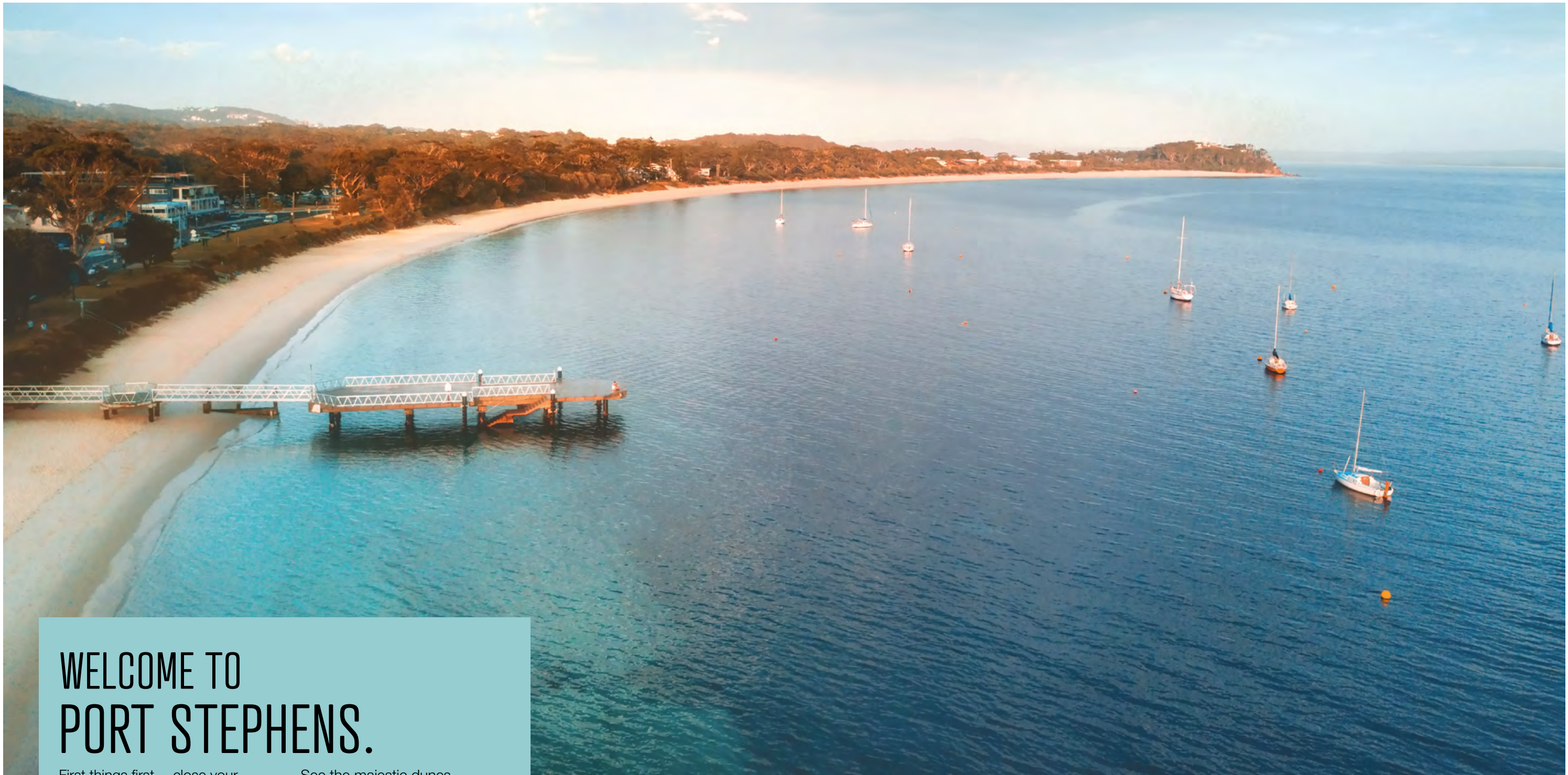


PORT STEPHENS

Visitor Guide





WELCOME TO PORT STEPHENS.

First things first... close your eyes.... (unless you're driving)... take a deep breath in... unbuckle the stress... and let it go.

Okay... now open your eyes... and exhale.

To make the most of your time in this place it's best to have all your senses attuned and your mind free to fully experience some of mother nature's best work.

We recommend you dive right in and let your senses swim in the natural beauty that surrounds you.

See the majestic dunes standing guard over the Worimi Conservation lands, feel the warm welcome from the locals, hear the calls of wild dolphins and humpback whales, taste the local produce fresh from the farmgate and smell the salt air as you gallop on horseback through the shallows where the Pacific meets our coast.

Whether you're looking for a big adventure or just a little relaxation we think you'll find our place simply sensational!

So please... make yourself at home.

GUUDJI YIIGU (Goo-jee ik-koo)

The Worimi Traditional Owners welcome you to Port Stephens

Port Stephens is a part of the country of the **Worimi Aboriginal Nation** and offers visitors many unique, authentic and remarkable experiences. The Australian Aboriginal culture, the oldest living culture on earth, is as diverse as the lands they inhabit, encompassing many nations, languages, traditions and customs.

The Worimi Aboriginal Community welcomes visitors to their land and invites all to enjoy and appreciate the wonders of the natural landscapes and the rich cultural and spiritual sites. Please step thoughtfully on these lands, respecting the traditions of our ancestors who walked before us and preserving them for generations to come. Through the

implementation of sustainability and resource management principles and the effective management of the marine and terrestrial features Port Stephens thrives with an abundant environment filled with remarkable flora, fauna and marine species.

The Worimi Aboriginal Nation wishes you an enjoyable time.

CONTENTS

- 04 GETTING HERE
- 06 SAND DUNES
- 08 NATURE
- 10 WATER
- 12 WHALES
- 13 DOLPHINS
- 14 NEIGHBOURHOODS
- 16 SEE & DO
- 18 STAY
- 20 EAT
- 22 EVENTS
- 23 DOG INFORMATION
- 24 HIKE & BIKE
- 26 BEACH & BAY GUIDE
- 28 CONFERENCES & WEDDINGS
- 30 TOURS, ACTIVITIES, EAT & STAY
- 51 MAPS OF PORT STEPHENS
- 54 DIRECTORY

GETTING HERE

SELF DRIVE

Port Stephens is a 2.5 hour drive north from Sydney and a 1 hour drive from Newcastle.



Approximate distances to Nelson Bay, Port Stephens

Sydney via M1	207km
Newcastle via Nelson Bay Road B63	60km
Hunter Valley via Nelson Bay Road B63	104km
Port Macquarie via Pacific Highway A1	250km
Dubbo via Golden Highway B84	416km
Tamworth via New England Highway	321km
Brisbane via Pacific Highway A1	778km

COACH

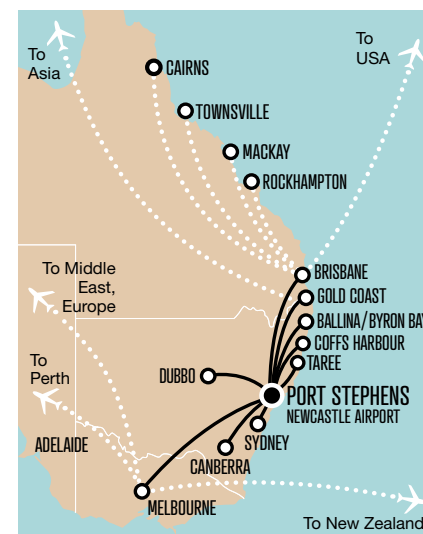
Port Stephens Coaches depart daily from Sydney via Chatswood, Pymble and Hornsby to Port Stephens (including Raymond Terrace, Soldiers Point, Salamander Bay, Nelson Bay, Shoal Bay and Fingal Bay).

Phone **1800 045 949** or visit www.pascoaches.com.au

AIR

Newcastle Airport hosts domestic flights to and from Melbourne, Canberra, Brisbane, Sydney, Gold Coast, Ballina and a host of regional NSW destinations.

Phone **02 4928 9800** or visit www.newcastleairport.com.au



RAIL

TrainLink provides services in and out of Newcastle from all over New South Wales. Phone **131 500**.

TRANSFERS

Newcastle Airport Information Services is your one-stop-shop for transfers. Book a door to door transfer to meet any flight in or out of Newcastle.

Phone **02 4928 9800** or visit www.newcastleairport.com.au

Port Stephens Coaches provide a pick up close to Hamilton Railway Station and Newcastle Interchange as well as Newcastle Airport to Port Stephens on a regular basis.

Phone **1800 045 949** or visit www.pascoaches.com.au

VISITOR INFORMATION

Bookings + Gift certificates + Tours + Souvenirs (Nelson Bay) + Guides + Friendly, helpful advice!

Come and see our team at your closest Port Stephens Visitor Information Centre. We can help find, and book, the right accommodation, tours, transport, or even a hairdresser's appointment! We'll find activities or facilities for seniors, families, teens, romantics, foodies or wellness warriors.

If you want to pop the question in a unique location, host an event, create a conference, find a doctor, book a wedding co-ordinator, try a vegetarian restaurant, go on a walking trail, discover a new surf spot, or simply find your way home - we've got you covered.



Call **1800 808 900** or email info@portstephens.org.au today!

Main Centre:



NELSON BAY
Map 2 O8

02 4988 0900
Victoria Pde (near waterfront)

1800 808 900
www.portstephens.org.au

 **KARUAH**

Map 2 D2
02 4987 0002
Karuah Centre, 393 Tarean Road

 **SALAMANDER BAY**

Map 2 K8
02 4982 7211
Salamander Village Bottle Shop, 259 Soldiers Point Road

 **TANILBA BAY**

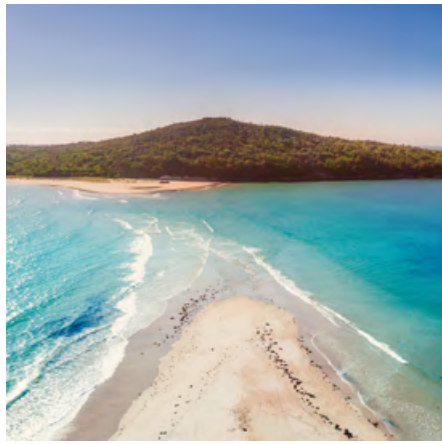
Map 2 H9
02 4984 5677
Tilligerry Habitat Assoc. 2E King Albert Avenue

SAND DUNES.

There is no other place on earth where you can experience the likes of the monumental Stockton Bight Sand Dunes... the largest of their type in the southern hemisphere! As part of the Worimi Conservation Lands the dunes stretch 32km along the breathtaking Port Stephens coastline and are home to an extraordinary number of ancient sites of cultural and historical significance for the

Worimi people. Reaching heights of over 30m with slopes up to 60 degrees - these truly awe-inspiring dunes offer a range of unique, bucket-list worthy encounters from sandboarding and quadbiking to camel and horse rides. Gently immerse yourself in a tour of the ancient lands or go full throttle on an adrenaline-charged adventure - either way, it's *sandsational*!





NATURE.

Whether you're hiking to the top of Mount Tomaree to marvel at the majestic views, diving amongst the coral gardens at Fly Point, mountain biking through bush trails at Big Rocky, or discovering the natural 'champagne spa' in rockpools at Boat Harbour - you'll soon realise that wonders never cease here in Port Stephens. Nature's gifts of beauty rich

and rare are all around us in the Tomaree National Park. Coastal bushland, sand dunes, heathland, forests and over 20km of rocky coastline and stunning white sandy beaches provide some amazing insta-worthy backdrops and unforgettable experiences.

After all... life is all about collecting moments - not things.

WATER.

With 26 beaches, a bay twice the size of Sydney Harbour, two lakes and a myriad of rivers, creeks and estuaries - the 98,000 hectare Port Stephens Great Lakes Marine Park is truly something to behold. Whilst offering a sanctuary for the local marine life - mere mortals find these turquoise bays and glistening beaches irresistibly

intoxicating. Whether riding the impossibly perfect wave, swimming with wild dolphins, dropping anchor at a deserted island, skimming across the water in a jet boat or just paddling in rock pools and spying starfish... you're invited to dive right in and make a splash in our blue water wonderland.



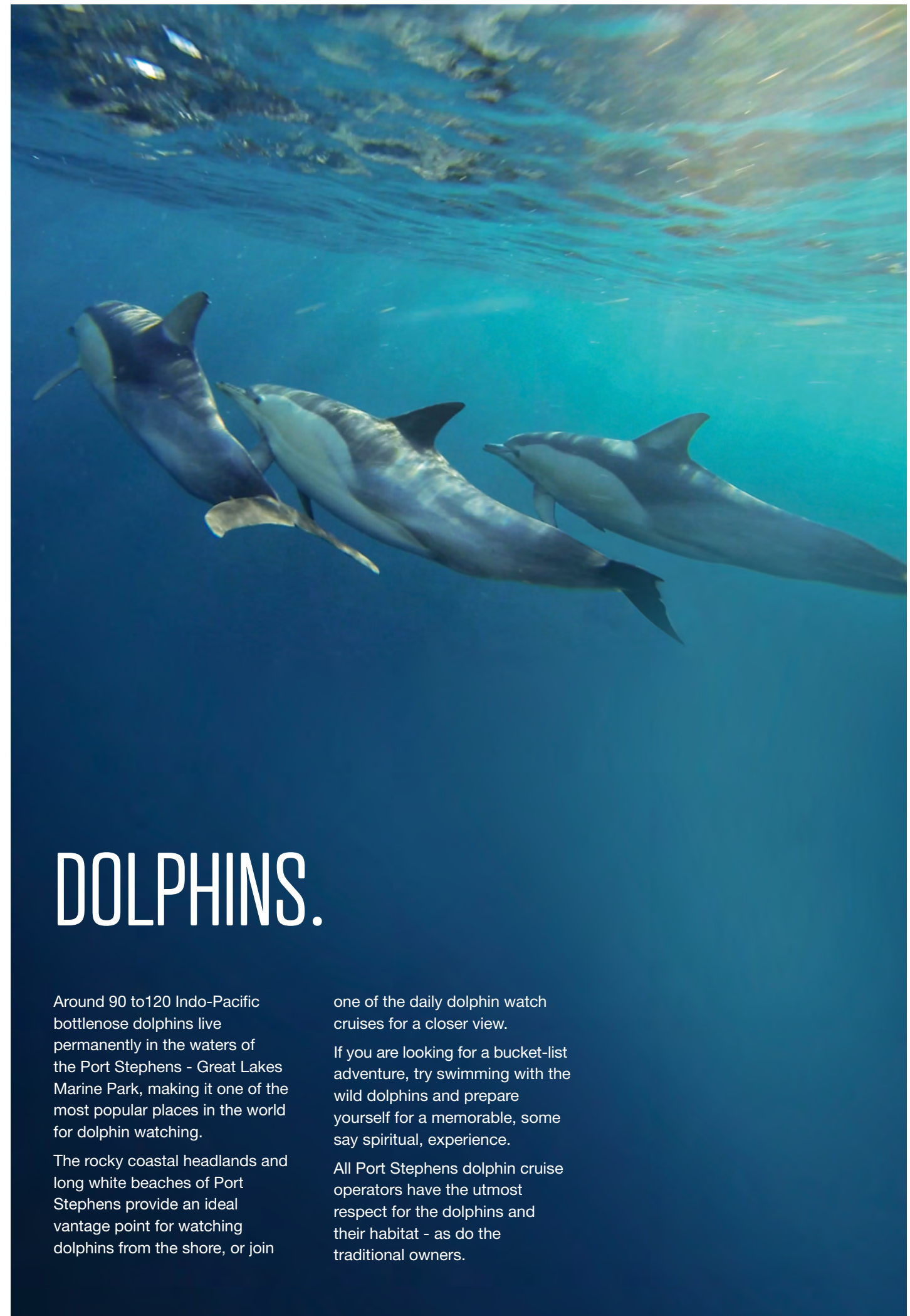
WHALES.

Now here's something to spout about! Port Stephens, is a world renowned whale watching destination parked right in the middle of the Humpback Highway! Whales meet their need for food and suitable calving areas by travelling long distances from cold feeding areas, to warm, shallower waters for calving and mating.

See the whales as they migrate along the NSW coastline, spot humpbacks breaching and southern rights spy-hopping between May and November from vantage points along the spectacular coast or get up close on one of our award-winning whale watching cruises.

Best viewing locations in Port Stephens:

- On a whale watching cruise
- Barry Park, Fingal Bay
- Boat Harbour Headlands
- Birubi Point, Anna Bay
- Fishermans Bay Headland
- Tomaree Headland, Shoal Bay



DOLPHINS.

Around 90 to 120 Indo-Pacific bottlenose dolphins live permanently in the waters of the Port Stephens - Great Lakes Marine Park, making it one of the most popular places in the world for dolphin watching.

The rocky coastal headlands and long white beaches of Port Stephens provide an ideal vantage point for watching dolphins from the shore, or join

one of the daily dolphin watch cruises for a closer view.

If you are looking for a bucket-list adventure, try swimming with the wild dolphins and prepare yourself for a memorable, some say spiritual, experience.

All Port Stephens dolphin cruise operators have the utmost respect for the dolphins and their habitat - as do the traditional owners.

NEIGHBOURHOODS.

Welcome to the neighbourhood! Here you'll be able to explore the unique attractions and experiences of all of beautiful Port Stephens' individual precincts. Whether you only have one day or a whole week - make the most of your time here and take advantage of our local knowledge to discover hidden treasures like secret walking trails, great sunset spots, where to get the best view of the whales or where to find the best fish and chips. Explore, enjoy and embrace... find out more at www.portstephens.org.au



Anna Bay

Anna Bay is the entry point to Stockton Bight Sand Dunes, in the Worimi Conservation Lands - the largest moving coastal dunes in the southern hemisphere. The 32km stretch of beach is a favourite spot for 4WDs, fishing and surfing. **Must do:** Experience the 40m high sand dunes by 4WD, sandboard, camel or horseback.



Corlette & Salamander Bay

Corlette has relaxing walks, gorgeous waterfront parks and reserves perfect for picnics and cycle paths where you can ride into Nelson Bay. Salamander Bay has a major shopping centre and a family entertainment and aquatics precinct nearby. **Must do:** Take the plunge and zoom down the hill on the toboggan run nearby.



One Mile & Boat Harbour

Where the bush meets the rugged coastline, known for its natural beauty, secluded beaches, coastline walks, rainforest and koala habitats. Get back to nature, learn to surf or try a spot of fishing. **Must do:** Spot the whales off the rocks at Boat Harbour.



Fingal Bay

A picturesque coastal village surrounded by natural bushland with a white sweeping sandy beach and rocky coastlines. This family-friendly, patrolled surf beach is perfect to catch a wave, catch a fish, or just catch a sunrise **Must do:** Take a boat trip to Fingal Island and discover Point Stephens Lighthouse.



Nelson Bay

The heart of Port Stephens, Nelson Bay is the CBD of the Tomaree Peninsula and the main tourist precinct with its thriving marina, pretty foreshore, bustling shopping, cafés and restaurants. d'Albora Marinas is also where you board for cruises. **Must do:** Sip a divine cocktail at a waterfront restaurant and watch the sunset.



Raymond Terrace & Karuah

Raymond Terrace is an historic rural town on the edge of the Hunter River the perfect spot for waterskiing or picnics on the grassy river banks. Twenty minutes further north is the tranquil riverside hamlet of Karuah known for its oysters, house boats and fishing spots. **Must do:** Taste the freshly shucked oysters from local oyster farmers.



Salt Ash & Bobs Farm

The Salt Ash and Bobs Farm precinct is the food bowl of the peninsula with working farms and vineyards providing foodies with farm-gate fresh produce. The area has a unique hands-on animal adventure park, go-karts, paintball, Murray's Brewery and more. **Must do:** Feed the baby animals at Oakvale Wildlife Park.



Shoal Bay

This heavenly hamlet is just 5 minutes from Nelson Bay CBD and handy to clubs, pubs, restaurants, cafes and water activities. It boasts a postcard perfect beach with a lighthouse at one end and the famous Mount Tomaree at the other. **Must do:** Walk to the top of Tomaree Summit for unforgettable views.



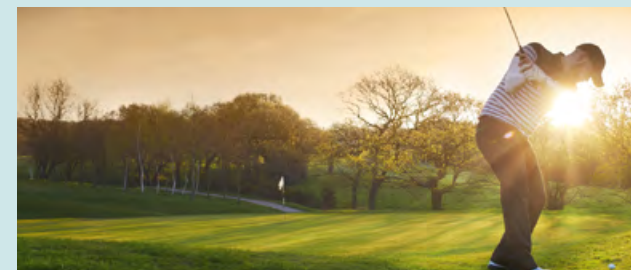
Soldiers Point

Located on a peninsula with stunning waterways, featuring a marina, jetties, boat ramps and calm swimming beaches - this is the perfect spot for boating, fishing and communing with nature. **Must do:** Pack a picnic and head to Sunset Beach for a spectacular sunset.



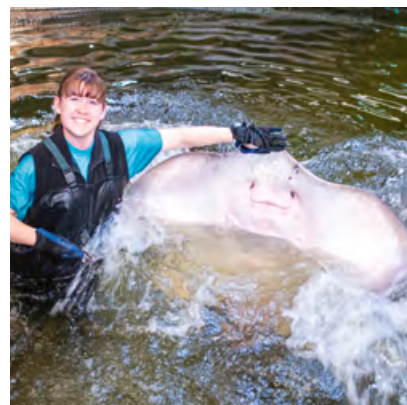
Tilligerry

Take a left at Salt Ash for the Tilligerry Peninsula leading to historic Tanilba Bay, Lemon Tree Passage and Mallabula - all relaxed waterfront hamlets in nature's playground. Don't miss the Tilligerry Habitat Reserve - 9 hectares of flora and fauna reserve. **Must do:** See local koalas at their favourite feeding spot.



Williamstown & Medowie

Williamstown is home to Newcastle Airport, the RAAF base, Fighter World aviation museum and access to the dunes. Medowie boasts a championship golf course and many fresh produce stalls. **Must do:** Watch the Fighter Jets take off from the viewing deck then visit Fighter World or experience a quad bike tour.



SEE & DO.

There are so many things to see and do in Port Stephens. Of course, there are our obvious natural stunners - the beaches, the waterways, the dunes, the whales, the dolphins - but our holiday destination provides visitors with so many activities, attractions and tours that you may have to extend your stay to experience them all.

Passionate and professional tour operators provide unique and entertaining experiences that are as varied as they are many. So there is no excuse for anyone to get bored, unless it's a sand board, surf board or stand up paddle board. Whether you're 8 or 80 there really is something suit everyone.

The kids will love Splash Waterpark, foot golf, tobogganing, go-karting, swimming with the sharks at Irukandji and getting up close and personal with the baby

animals, and koalas at Oakvale Wildlife Park.

Take the family on an adventure to Fighter World and get in the cockpit of a Macchi Jet trainer, challenge the kids to a game of mini golf, take a scenic trike tour, or a dolphin cruise experience. Discover Fingal or Broughton Island on a guided tour, catch the ferry to Tea Gardens, visit the Botanic Gardens, take a kangaroo tour or an Eco Tour at Tilligery Habitat. Try your hand at rock climbing, ten-pin bowling, paintball or battle zone. Chill out with the stars at the cinema or shop 'til you drop at the shopping centres, markets and the Nelson Bay precinct.

Whether you're the adventurous type or just looking for some good, safe family fun - you'll find something for everyone here in Port Stephens.



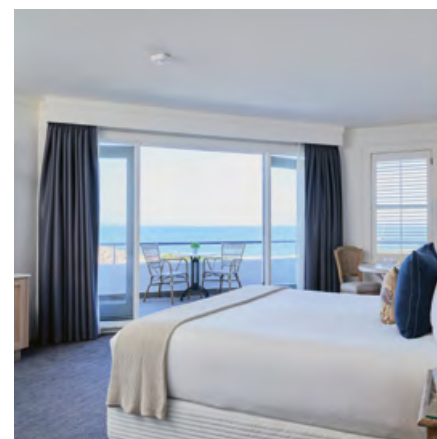
STAY.

There is nothing like waking up in a beautiful room on one thousand thread count sheets and looking out over a glistening pool to a sparkling bay... you know you're on holidays.

No work for you today! Just fun in the sun by the pool, a spot of shopping and maybe a cocktail at lunch - nothing too strenuous.

From budget adventurers on a world journey with a backpack, a positive attitude and very little cash - to international travellers with a hankering for luxury at a sensational Australian coastal getaway - Port Stephens has digs that everyone will dig!

Accommodation of all types abound; dormitory style for school camps, backpackers, holiday parks, safari tents, cabins, self-contained apartments, holiday homes, bed & breakfast, hotel rooms, units, studio apartments and treehouses just to name a few.





EAT.

From fine dining to fish & chips, the abundance of local produce fresh from the farmgate and fishing trawlers, together with the spectacular location, has put Port Stephens firmly on the map for foodies and top chefs alike.

The Hunter River estuaries are bursting with unique sweet prawns and glorious plump, tasty oysters. The Myall Lakes and River are teeming with blue swimmer and mud crabs and all kinds of fish and then, of course, there's the Port Stephens' lobsters! With local farms growing everything from avocados and stone fruit to figs and macadamias as well as the famous Anna Bay tomatoes - it's easy for chefs to design menus inspired by the fresh, seasonal produce they find on their doorstep.

The spectacular dining options are matched by equally stunning locations. Views over the water to watch the sun sink slowly behind a Marina,

fish & chips by the beach, or fine dining in a boathouse.

Take your taste buds on a multicultural trip around the globe with cuisines from Thailand, India, China, Malaysia and Italy. Indulge in a glorious sunset dinner cruise across the calm waters of the bay and watch the bay lights sparkle to life as night falls. Visit a lighthouse for a spot of devonshire tea and an irresistible view.

Make a delicious detour to Soldiers Point for a sensational seafood feast at a waterfront restaurant at sunset. Take it easy and drop into the marina for a tasty wood-fired pizza and an icy cold beer! Venture to the local vineyard and boutique brewery for a lazy Sunday afternoon of music, food, wine and craft beer. Discover a vibrant foodie precinct in Nelson Bay with sidewalk cafés and sensational coffee... it all adds to a wonderful smorgasbord of flavours and food experiences to indulge your senses.



EVENTS.

We love an event here in Port Stephens... from markets at the marina and music festivals to Ultimate Frisbee Championships and world class sailing regattas. The welcome mat is out and our door is always open, so come on in to Port Stephens... bring your friends - the more the merrier!

For details on these and other events in Port Stephens go to www.portstephens.org.au

SUMMER

- Christmas Carols and New Year's Eve Celebrations - December-January
- Sacred Tree Markets - December-January
- Australia Day Celebrations - 26 January
- Port Stephens Toyota Wildcard Trials, Surfest - January
- Peter Wilson Memorial Cup Junior Touch Football - February
- NSW Game Fishing Association Interclub - February
- Garmin Billfish Shootout Tournament - February
- Hunter Surf Lifesaving Branch Championships - February

AUTUMN

- ANZAC Day - April
- Club Marine Trailer Boat Fishing Tournament - April
- Australian Pacific Coast Spearfishing Championships - April
- Sacred Tree Markets - April
- Port Stephens Surf Festival - April-May
- Port Stephens Triathlon - May
- Sail Port Stephens - May
- Spartan Race Port Stephens - May

WINTER

- Sacred Tree Markets - June
- PCYC Nations of Origin - July
- NAIDOC Celebrations - July
- Human Whale - July
- Port Stephens Seafood Festival - August

SPRING

- Clans on the Coast - September
- TreX Multicross Triathlon and Tomaree Trail Festival - September
- Karuah Timber and Oyster Festival - October
- NSW Ultimate Frisbee Championships - October
- Sacred Tree Markets - October
- NSW u15 and u18 Women's Country Cricket Championships - October
- Port Stephens Toyota Surf Pro - November
- Tilligerry Festival - November

*Events are subject to change without notice.

DOGS.

If you're dotty about your dalmation, in love with your pug, or just adore your labrador ...it's okay, we understand. Here at Port Stephens we are just fine with your canines... as long as you follow a few rules for everyone's protection.

Below is a list of the numerous parks, beaches and reserves where dogs can be exercised off-lead. Some areas have limitations on times and specific boundaries.

To find out more - go fetch the "dog exercise maps" online at www.portstephens.nsw.gov.au

Responsibilities of pet owners in NSW

- If your dog is in a public place it must be under the effective control of a competent person (over 16yrs old) by means of an adequate chain or leash. The exceptions to this are: dogs exhibited at a show or engaging in obedience or agility trials or a dog secured in a cage or in an approved off-leash area
- If your dog is being exercised in an approved area it must always be under effective control of a competent person (over 16 yrs old)
- You are not permitted to walk more than 4 dogs at any one time in an on-leash or an off-leash area
- Greyhounds must be muzzled at all times when in a public place, except if the greyhound has successfully completed an approved greyhound retraining program and the greyhound wears an approved collar when it is in a public place
- If your dog defecates in a public place it is an offence not to remove the faeces
- Dogs are prohibited in children's play areas, food preparation/consumption areas, recreation areas, public bathing areas, school grounds, child care centres, shopping areas and wildlife protection areas
- Some areas are off-leash but with time restrictions
- Off-leash areas form part of large reserve areas and beaches where boundaries must be adhered to.

Dog exercise areas

- Kooinda Park, Lemon Tree Passage
- Caswell Reserve, Mallabulla
- Lancaster Park, Soldiers Point
- Boomerang Park, Raymond Terrace
- Alton Park, Raymond Terrace
- Coachwood Drive Reserve, Medowie
- Aliceton Reserve, Karuah
- Fenced area along the foreshore at Fingal Bay
- Bagnalls Beach Reserve, Nelson Bay
- Sergeant Baker Drive Reserve, Corlette
- Tom O'Dwyer Oval, Nelson Bay
- Marrungbanga Reserve, Shoal Bay (prohibited between 9am - 5pm)
- Fishermans Bay Park, Fishermans Bay
- Birubi Beach Reserve, Anna Bay (prohibited between 9am - 5pm; daylight savings and 10am - 4pm; non-daylight savings) and not within 100m of the beach patrol areas at any time.
- Boat Harbour South Headland, Boat Harbour

Dog exercise maps can be found at www.portstephens.nsw.gov.au



HIKE.

TOMAREE HEAD SUMMIT

Distance: 2km (one way)
Time: 45 minutes each way
Difficulty: Medium

Take the invigorating short walk to the summit of Tomaree Head, 161m above the Port Stephens entrance. Enjoy unparalleled views from the top.

FORT TOMAREE

Distance: 2km (one way)
Time: 30 minutes each way
Difficulty: Medium

This easy walk on a paved track around the lower slopes of Tomaree Head brings you face-to-face with local military heritage - World War II Gun emplacements, built in 1941.

BIG ROCKY

Distance: 1.4km (one way)
Time: 30 minutes each way
Difficulty: Medium

A sandy track leading to a rocky headland ideal at low tide.

WRECK BEACH

Distance: 1km (one way)
Time: 20 minutes each way
Difficulty: Medium

This easy walk to Wreck Beach, through a lush coastal Angophora forest, leads onto a small cove with beautiful sand and open views of the ocean.

MORNA POINT

Distance: 5.5km (loop)
Time: 2 hours 30 minutes
Difficulty: Medium

A relaxing, wildflower laden, walk to the coast with some detour tracks.



For guided tours visit www.portstephens.org.au



BIKE.

BARTLETT CYCLEWAY

Distance: 5km (one way)
Time: 30-45 mins
Difficulty: Easy

From Bagnalls Beach, to Little Beach / Inner Light Cafe via Dutchies, Nelson Bay Marina, Fly Point and Little Beach.

FINGAL CYCLEWAY

Distance: 3km (one way)
Time: 20-30 mins at leisurely speed
Difficulty: Easy

From Fingal End of Tomaree Road to Barry Park via Fingal Surf Club, Fingal Beach and Barry Park Whale Watching Platform.

ZENITH TO FINGAL CYCLEWAY

Distance: 2.5km (one way)
Time: 20-30 mins at leisurely speed
Difficulty: Medium (some areas require caution)
From Zenith Beach to Fingal Cycleway via Wreck Beach and Box Beach.

MAIN TRAILS IN TOMAREE NATIONAL PARK

TANK TRAIL & ANNA BAY BORE LINE

Distance: 5km (one way)
Time: 30-45 mins
Difficulty: Easy

From Fingal Bay Sports Club to the Polyclinic.

OTHER TRAILS PERMITTED FOR CYCLING WITHIN TOMAREE NATIONAL PARK

- Sewer Line Trail
- Moorland Trail
- South Gan Gan Trail
- Big Rocky Road
- Fenceline Trail
- Kunara Trail
- Skid Pan Trail
- Met Station Trail
- Glovers Hill Trail
- North South Trail
- Met Station Link Trail



BEACH+BAY

TOMAREE PENINSULA

Bagnalls Beach Map 2 N8
Between Dutchmans & Corlette, the foreshore reserve is an approved 'dog on/off lead' area.
Activities: Swimming, kite surfing, picnicking.
Facilities: BBQ, car park, playground, toilets.

Barry Park Map 2 N8
Headland at the southern end of Fingal Bay Beach.
Activities: Scenic walking trails and whale watching platform
Facilities: BBQ, picnic tables, public amenities including disabled toilets

Birubi Beach Map 2 K14
Located at the eastern end of Stockton Beach
Activities: Swimming, surfing, fishing, picnicking.
Facilities: Playground, toilets, skate park, learn to surf school.
Lifeguards Monday to Friday 10am - 5pm, Saturday to Sunday 9am - 5pm. Christmas School Holidays Monday to Sunday 9am - 6pm. Annual patrols conclude late April and recommence late September.

Boat Harbour North Headland Map 2 N15
Ocean beach ideal for children
Activities: Swimming, fishing, picnicking.
Facilities: BBQ, beach boat ramp, shop, playground, disabled toilets.

Box, Wreck, Zenith Beaches, Kingsley Beach Map 2 R8-10, M15
Tomaree National Park
Activities: Swimming, surfing, whale & bird watching.
Facilities: Car park at Kingsley, Zenith & Box. Wreck Beach not easily accessible.

Corlette Map 2 M8
Conroy & Corlette Parks
Activities: Swimming, picnicking.
Facilities: BBQ, car park, playground, outdoor shower, toilets.

Dutchmans Beach Map 2 O8
Quiet calm waters
Activities: Swimming, picnicking, walking track.
Facilities: BBQ, car park, playground, toilets, outdoor shower.

Fingal Bay Foreshore Reserve Map 2 R11
Surf beach, ideal for families. Walk to Barry Park
Activities: Swimming, surfing, fishing, picnicking, lighthouse, whale watching.
Facilities: BBQ, car park, shop, playground, shelter, showers, toilets, cycle path, outdoor exercise equipment.
Lifeguards Monday to Friday 10am - 5pm, Saturday to Sunday 9am - 5pm. Christmas School Holidays Monday to Sunday 9am - 6pm. Annual patrols conclude late April and recommence late September.

**FINGAL SPIT WARNING**

The Fingal Spit is a beautiful spot for a beach stroll on low tide to Fingal Island, but it is important to realise that it can turn deadly.

- Do not cross in either direction if ANY water is over the Spit due to strong currents.
- Always check the tide chart before crossing.
- On your way back from Fingal Island, if there is water over the sand - stay where you are and call for help.

Fishermans Bay Park Map 2 L15
Anna Bay
Activities: Scenic location
Facilities: Beach boat ramp, toilets.

Fly Point Park Map 2 P8
This aquatic reserve is a haven for divers.
Shady grassed areas.
Activities: Snorkelling, diving, fish feeding, picnicking, walking track through native flora gardens.
Facilities: Amphitheatre, BBQ, shelter, toilets & skate park nearby.

Little Beach Reserve Map 2 P8
Suitable for family and social club gatherings. Gentle waters, ideal for young children.
Activities: Swimming, lighthouse, picnicking.
Facilities: BBQ, boat ramp, car park, shop, playground, toilets and play area for the disabled, fish cleaning tables.

Nelson Bay Foreshore Map 2 O8
Perfect for paddling and relaxing. Located in the heart of Nelson Bay.
Activities: Swimming, picnicking.
Facilities: Metered car parking, play equipment, shop, disabled toilets, hire facilities (kayaks).

One Mile Beach Map 2 N14
This is a popular beach
Activities: Swimming, surfing, fishing, walking track, picnicking.
Facilities: BBQ, car park, kiosk, toilets, outdoor shower, learn to surf school.
Lifeguards Monday to Sunday 10am - 5pm. Christmas School Holidays Monday to Sunday 9am - 6pm. Annual patrols conclude late April and recommence late September.

Salamander Bay Map 2 L9
Bob Cairns, Joe Redman, Roy Wood Reserves.
Activities: Swimming, picnicking.
Facilities: BBQ, car park, playground, toilets. Not all facilities at all reserves.

Samurai Beach Map 2 N13
Surf Beach
Activities: Swimming, surfing, fishing, 4WD (permit required)
Facilities: Clothes optional.

Shoal Bay Map 2 Q8
Spectacular view of the Heads
Activities: Swimming, fishing, picnicking, SUP.
Facilities: BBQ, car park, hire facilities, shop, public jetty, shelter, toilets, boat ramp.

TILLIGERRY PENINSULA

Lemon Tree Passage Map 2 I9
Activities: Swimming, fishing, picnic.
Facilities: Enclosed swimming area, BBQ, boat ramp, car park, shop, playground, public jetty, shelter, toilets.

Mallabula Map 2 H9
Activities: Swimming, fishing, picnic.
Facilities: BBQ, high tide boat ramp, playground, shelter, toilet.

Tanilba Bay Map 2 F9
Activities: Swimming, fishing, picnic.
Facilities: BBQ, car park, playground, shelter, toilet.

Care should be taken when swimming or fishing. Strong rips and undercurrents can occur.
For a full list of beaches, foreshores and dog parks visit www.portstephens.nsw.gov.au

Soldiers Point Map 2 K6
The place for sunsets
Activities: Swimming, fishing, picnicking.
Facilities: Boat ramp, car park, disabled toilets.

Stockton Beach Map 2 K15
Surf beach. Largest mobile sand mass in Southern Hemisphere
Activities: 4WD (permit required).
Facilities: Car park, kiosk, disabled toilets, surf club, learn to surf school.

Sunset Beach Map 2 J6
Soldiers Point
Activities: Swimming, fishing, picnicking.
Facilities: No provision along foreshore. Amenities at Spencer Park.

Taylors Beach, Foreshore Reserve Map 2 J10
Away from the crowds.
Activities: Swimming, fishing, picnicking.
Facilities: BBQ, beach boat ramp, car park, playground, public jetty, toilets.

Wanda Beach Map 2 K8
George Res. Western end of Salamander Bay.
Activities: Swimming, picnicking.
Facilities: BBQ, car park, playground, toilets.

KARUAH

Longworth Park Map 2 D2
Activities: Swimming, fishing, picnic.
Facilities: Covered BBQ, public jetty, disabled toilets, tidal baths, marine pump out facilities.

RAYMOND TERRACE

Riverside Park Map 1 H11
Activities: Fishing, picnic.
Facilities: BBQ, playground, disabled toilets, public jetty.

BEACH VEHICLE PERMITS - WORIMI CONSERVATION LANDS

All vehicles entering the Worimi Conservation Lands must be registered and display a valid Worimi Conservation Lands vehicle permit. The Worimi Conservation Lands is considered a road related area and road rules apply under Road Transport (General) Act 2005.

PERMIT TYPES

There are two types of permits available:

1. Beach Vehicle Permits
2. Recreational Vehicle Area Permits

BEACH ACCESS

The two access points to the beach are:

1. Williamtown - Lavis Lane (Map 1, J13) page 51.
2. Anna Bay - Gan Gan Road (Map 2, K14) page 52.

BEACH VEHICLE PERMIT COSTS

Annual Permit and Three-Day Permits available to access the Worimi Conservation Lands.
You can purchase your permit at the Visitor Information Centre at Nelson Bay, The Metro at Williamtown and the BP service stations at Anna Bay and Salt Ash.
For current Worimi Conservation Lands beach vehicle permit fees visit www.worimiconservationlands.com/vehicle or call the Visitor Information Centre on 1800 808 900.



CONFERENCES.

Whoever said you can't mix "business with pleasure" has never been to a Port Stephens business event!

Let's face it - where else can delegates see historic fighter planes, slide down a sand dune, sail across a bay, take a yoga class, enjoy fresh lobster on a yacht, watch dolphins dive, bushwalk to a spectacular lookout, taste beer and fresh macadamias and get up close and personal with a whale?

Sure, that bridge in Sydney is impressive, Melbourne trams are quaint and seals at Sea World are adorable... but just take a look at our sparkling bay that's twice the size

of Sydney Harbour, the largest sand dunes in the southern hemisphere, or the amazing untrained seals that you can observe in their natural habitat.

We really do have "beauty rich and rare". It's not just our good looks that attract the conference market, we're also really good at providing memorable activities, brilliant accommodation and great service.

Port Stephens is your destination for relaxation, recreation, education, contemplation, motivation and congregation!

For information go to our website: www.portstephens.org.au

WEDDINGS.

Whether you're dreaming of a beach wedding, an eco-chic reception, or a desert themed event with camels at sunset, we have the locations, the experience and the people to make your wedding a celebration everyone will remember!

Amaze your guests as you step onto the white sand with a backdrop of clear, aquamarine waters or a woodland fantasy dripping with fairy lights, or perhaps an Arabian inspired white canopy, like a mirage in the desert dunes. Anything is possible with imagination, good styling, a fabulous wedding coordinator and the stunning locations in Port Stephens.

Spoil yourself with luxury accommodation for your wedding night or honeymoon. Your family and friends will love the range of accommodation styles available -

from self-contained family holiday cabins to opulent waterfront units or hotel rooms. There's something to suit the bridal party, your family and friends.

Your guests will thank you for taking them to a little piece of paradise where time can be spent on dolphin cruises, kayaking, bushwalking, sailing or just relaxing by the clear blue waters of one of our 26 beaches and bays.

With award winning wedding venues, professional, experienced event organisers, amazing locations and a great range of accommodation - you're bound to fall in love with a Port Stephens wedding. So, before you say I do... say hello to Port Stephens!

For all you need to know about Port Stephens weddings, visit: www.portstephens.org.au/weddings



Port Stephens 4WD Tours

#1 4WD Tour Operator in Port Stephens.

We offer the ultimate beach and sand dune tours on the amazing Stockton Beach. Sandboard down the largest moving coastal sand mass in the Southern hemisphere, experience the history behind "Tin City", or hire out a private charter to do what you wish.

- Sandboarding Adventures
- Beach & Dune tours & "Tin City"
- Private Charters
- Save with a combo deal. Enjoy a Port Stephens 4WD Adventure combined with a Dolphin or Whale Watch.

Tours depart daily in our range of air-conditioned, modern, comfortable, off-road 4WD vehicles.

- Sandboard for as long as you like
- Sandboarding shuttle departs regularly
- Award winning service
- Experienced tour guides and instructors on hand to assist

Depart from the lower car park at the end of James Paterson Street, Anna Bay. Look for the big red 4WD and red trailer.



Map 2 K15 ■ 02 4984 4760 ■ Shop 2, 55 Donald Street, Nelson Bay ■ info@portstephens4wd.com.au
 ■ www.portstephens4wd.com.au ■ www.facebook.com/portstephens4WDtours

Sand Dune Adventures

Sand Dune Adventures offers clients an exclusive "Cultural Quad Bike Riding" experience like no other, traversing the majestic and traditional landscape of the Worimi Sand Dunes in Port Stephens – the largest coastal moving sand mass in the southern hemisphere.

Customers ride safely from bush to beach on a 400cc quad bike and take in the glorious views of the sweeping coastline (NO EXPERIENCE NECESSARY) with our experienced Aboriginal guides.

SDA tours cater from beginners to the experienced and offer the thrill of riding sand dunes that climb as high as 100 feet. So if it is adrenalin or just cruising, SDA offers the greatest adventure on one of Australia's greatest kept secrets, the Worimi Sand Dunes!

- Award winning quad bike company
- Hummer safari tours on the dunes
- Aboriginal culture tours



Map 1 K11 ■ 02 4033 8808 ■ 2163 Nelson Bay Road, Williamtown ■ sda@worimi.org.au
www.sandduneadventures.com.au ■ www.facebook.com/SandDuneAdventures



Sandboarding Australia @ 4WD Tours R Us

Experience the thrill of sliding down the towering dunes of Stockton Beach with us at 4WD Tours R Us! Conquering the dunes which can reach a whopping 50 meters tall is a must do activity while visiting Port Stephens.

- Unlimited Sandboarding
- Tin City tours
- Sunset picnics
- Customised 4WD vehicles
- Trained tour guides

We depart every half an hour from 10AM until 3:30PM from the Lower Carpark on James Paterson Street.



Map 2 K15 ■ 02 4981 9352 ■ www.4wdtoursrus.com.au
 ■ Lower Carpark, James Paterson Street, Anna Bay
 ■ 4wdtoursrus@gmail.com ■ www.facebook.com/4wdtoursrus



Sand Dune Safaris

At Sand Dune Safaris we love providing our customers with a unique, personal and exciting experience! We cater to families, couples and smaller groups. This means less crowds and more personal service! We offer both sit down and stand up sandboarding, with a variety of boards to choose from. Or join us for a Tin City or Private Safari.

An unforgettable sand dune experience!



Map 2 K15 ■ 0425 213 096 ■ sanddunesafaris@live.com.au
 ■ Lower Car Park, end of James Paterson St, Anna Bay
 ■ www.sanddunesafaris.com.au

Quad Bike King

The king of all adventure awaits...

Accelerating over the incredible mountainous dunes of Stockton Beach on a quad bike is the ultimate adrenaline thrill. It's like riding a jet-ski on the sand...only better!

Tour options include:

- **The Safari** - Put your quad bike through its paces or go at your own pace and enjoy the spectacular dunes as you go on a guided tour across the beach. Tour includes a visit to the Sygna Wreck. (Total experience is 1hr 45min)
- **The Sandpit** - Push your riding skills to the limit as you drift around the sand dune circuit, master donuts on sand and challenge your mates. (Total experience is 1hr 45min)
- **The Ultimate Combo** - Combine both the Safari and Sandpit tours for the full experience! (Total experience is 2hr 15min)



Map 1 K11 ■ 02 4965 0007 ■ sales@quadbikeking.com.au
 ■ www.quadbikeking.com.au ■ www.facebook.com/quadbikeking



4WD Tag-Along & Passenger Tours

Exclusive Bush, Beach & Sand Dune Tours,
THE ONLY 4WD TOUR WITH A DIFFERENCE

- Winners of TripAdvisor Certificate of Excellence 6 years in a row
- Established 1998 injury & accident free, Owner Operator
- Bring your 4WD or come as a passenger
- No experience necessary, free driver training
- Sandboarding on all tours
- Bush, Beach & Sand Dune Tours, Tin City



Map 2 K15 ■ 0411 296 288 ■ Gan Gan Road, Anna Bay
info@4wdtour.com.au ■ www.4wdtour.com.au
facebook.com/4wdtagalongtours

Sahara Trails Horse Riding

Come and enjoy one of our scenic guided trails to experience the peace and tranquility of our beautiful surrounds. Open 7 days.

- Family owned and operated
- Just 10 mins from Nelson Bay



Map 2 K13 ■ 02 4981 9077 ■ 9 Port Stephens Drive, Anna Bay
info@saharatrails.com ■ www.saharatrails.com

Oakfield Ranch Camels

Ride a Camel! Enjoy a relaxing ride along the sands of Birubi Beach, Anna Bay.

Great for all the family.



Map 2 K15 ■ 0429 664 172 ■ Lower carpark, end of James Paterson Street, Birubi Beach, Anna Bay
oakfieldranchcamels@telstra.com ■ www.oakfieldranch.com.au

Tea Gardens Ferry Service

Daily ferry cruises from Nelson Bay to Tea Gardens

Hop on board a historic ferry for a 1hr cruise across the bay and up the Myall River to Tea Gardens, straight through the heart of Port Stephens Marine Park.

- Spot dolphins
- Enjoy lunch along the waterfront
- Explore the local art gallery and boutiques
- Pay on board ferry, we accept cash or EFTPOS

Bookings Essential! Call or SMS 0412 682 117 or book online. Lunch offers available.

We depart daily from Nelson Bay public wharf at 40 Victoria Parade.

Visit our website for daily departure times.



Map 2 O8 ■ 0412 682 117 ■ 40 Victoria Parade, Nelson Bay ■ www.portstephensferry.com.au
bookings@portstephensferry.com.au ■ www.facebook.com/PortStephensFerry

Moonshadow - TQC Cruises

Experience is the difference...

Dolphin Cruises: 3 different Dolphin Watching experiences, something to suit everyone. Daily Departures

Whale Cruises: Port Stephens is known as the 'Humpback Highway', Join our daily departures with two Whale Watching Experiences on offer. Seasonal (May-November)

Dinner Cruises: Join our Famous Twilight Dinner Cruise, renowned Buffet, Live Entertainment, Fully licenced bar for the unique dining experience on the water

Broughton Island Cruises: A full day adventure cruising off-shore to this beautiful National Park Island. Explore, relax, snorkel. Enjoy a delicious Lunch and Afternoon Tea on board. A must do Day Excursion (seasonal)

Visit our website for private charter and combo deals!

Tag us on social #moonshadowtqc



Map 2 O8 ■ 02 4984 9388 ■ Shop 3, 35 Stockton Street, Nelson Bay
info@moonshadow-tqc.com.au ■ www.moonshadow-tqc.com.au ■ instagram.com/moonshadowtqc



Let's Go Adventures

A world of underwater adventures is waiting for you!

- Dive and Snorkel tours, from boat or shore
- PADI Dive courses - snorkel & intro dive training up to Instructor
- Snorkelling & SCUBA equipment hire and sales
- Air & Nitrox Fills
- Workplace First Aid, Boat and PWC Licence courses

Book online now!



Map 2 O8 ■ 02 4981 4331 ■ fun@letsgoadventures.com.au
www.letsgoadventures.com.au

Shoal Bay SUP

- Accredited SUP instructors
- SUP lessons and Hires
- Pedalboards and Waterbikes
- Delivery to your holiday house
- By the Boat Ramp at Shoal Bay



Map 2 R8 ■ 0428 604 460 ■ Bookings: shoalbaysup.com.au
On the Beach, Opposite 3 Shoal Bay Road, Shoal Bay
rod@shoalbaysup.com.au ■ www.facebook.com/ShoalBaySUP

Blue Water Sailing

Experience Port Stephens by luxury yacht with your choice of...

- Harbour Sail + Dolphin Watch
- Broughton Island Full Day (8 hours)
- Sunset Sail (2 hours)
- Luncheon Sail (4 hours)
- Private Charter for up to 20 people

Licensed with good selection of wine and beers available.



Map 2 M8 ■ 0448 111 331
Departs Anchorage Marina, Corlette
rhonda@bluewatersailing.com.au
www.bluewatersailing.com.au

Lazy Paddles

Join us for a lazy paddle on the Myall River in Tea Gardens. Paddle with a local on one of our guided tours, or hire one of our quality kayaks or SUPs and explore the area yourself. Bookings essential.



Map 2 Q3 ■ 0412 832 220 ■ Anzac Park, Marine Drive, Tea Gardens
info@lazypaddles.com.au ■ www.lazypaddles.com.au



Book today at
portstephens.org.au



Port Stephens - Great Lakes Marine Park

Our spectacular marine park extends from Cape Hawke near Forster to Birubi Beach (north of Stockton Beach) and includes the Myall and Smiths Lakes, the Myall and Karuah Rivers and offshore waters to approximately three nautical miles.

The park protects important marine habitats and species while catering for a wide range of activities such as fishing, boating, dolphin and whale watching, swimming, snorkelling, kayaking and more!

For details on your location in relation to marine park zones, weather and tide information, management rules and everything else you need to know when you're on the go, download the NSW DPI 'FishSmart' app from iTunes or Google Play.

Before you wet a line, please make sure you grab a copy of the **PSGLMP user guide**. Free copies are available from all outlets where recreational fishing licences are sold, local tourist information centres or via the marine park website.



Department of
Primary Industries

Map Var ■ 02 4916 3970 ■ Taylors Beach Rd, Taylors Beach ■ psglmp@dpi.nsw.gov.au ■ www.dpi.nsw.gov.au



Dolphin Swim Australia

Join us for the thrill of a lifetime and swim with WILD dolphins! This activity does NOT take place in a net. Guests are attached to a line strung between the bows of a 52' catamaran and pulled through the water with the dolphins swimming in front of them - often almost close enough to touch. Includes the swim, all gear, a light breakfast, educational commentary and all above-water photos!



Map 2 O8 ■ 1300 721 358

■ Dock C, d'Albora Marinas, Teramby Road, Nelson Bay
■ www.dolphinswimaustralia.com.au
■ www.facebook.com/dolphinswimaustralia

Imagine Cruises

Dedicated to the protection of dolphins and whales

- **Whale Watch**, 3 hour Sail or 90 minute Express. View whales in NSW largest Marine Park. Whale guarantee. May-Nov.
- **Swim with wild dolphins**, 4.5 hours. Sept-May.
- **Snorkel + Dolphin Watch**, 3.5 hours. Snorkel in the sparkling waters of an offshore island. All gear provided. Nov-April.
- **Dolphin Watch + Sailing**, 1.5 hours. Enjoy stunning scenery and meet some of our local dolphins. Nov-April.
- **Broughton Island**, 3 hours. Offshore dolphin watch. Swim or snorkel at picturesque Providence Beach. Nov-April.
- **Eco adventure cruise**, 1.5 hours. Opportunity to spot dolphins as we cruise the bay before swimming at a secluded beach.
- **Fingal or Broughton Island Eco-Walk**, 3.5 hours. Fully guided.
- Charter options available from \$300, conditions apply.



Map 2 O8 ■ 02 4984 9000 ■ Dock C, d'Albora Marinas, Teramby Rd, Nelson Bay

■ info@imaginecruises.com.au ■ www.imaginecruises.com.au ■ www.facebook.com/imaginecruises



Port Stephens Paddlesports

Come visit your local adventure merchant, offering total fun and discovery on the idyllic waters of Shoal Bay, and the neighbouring Marine Park Sanctuaries.

We provide:

- Single and Tandem Kayak Rental
- Stand Up Paddle Board Rental
- Catamaran Stand Up Paddle Board Rental (for 2-3 People)
- Guided and Self Guided Kayak Tours
- Picnic Packages
- FUN & ADVENTURE



Map 2 O8 ■ Shop 25, 47-51 Shoal Bay Road, Shoal Bay

■ 0405 033 518 ■ paddle@paddleportstephens.com.au
■ www.paddleportstephens.com.au
■ Instagram : @portstephens_paddlesports



Trike Tours

And now for something completely different! Trike Tours!

Climb aboard our state-of-the-art machines, get comfy, sit back and enjoy the wind in your hair as your trike pilot provides a tailor made tour around Port Stephens.

Get picked up from the location of your choosing and get ready to smile as you're chauffeured around this beautiful part of the world. Stunning coastline, beautiful bushland, beaches and bays restaurants and cafes.

Make a special day "spectacular" or arrive in style and impress the guests... whatever you have in mind we're pretty sure we can cater to your needs.

Safety is paramount... but fun is pretty important too! Talk to Scott today about your Trike-tastic adventure!

- Birthdays
- Weddings
- Special occasions
- Tour with your pet
- Surprise pick-ups
- Gift vouchers
- Promotions
- Escorts



Map Var ■ 0416 294 299 ■ info@triketours.net.au ■ www.triketours.net.au
 ■ www.facebook.com/Trike-Tours



Horizons Golf Resort

Experience Port Stephens Most Beautiful Course - Horizons Golf Resort.

A top 100 Australian 18 hole golf course with open air driving range, practice chipping and putting areas, stunning Clubhouse, function center and Cafe open 7 days a week to members and visitors.

Home to exceptional Golf, as well as FootGolf - a revolutionary new sport combining soccer and golf.

Golf | FootGolf | Driving Range
Café | Events



Map 2 L10 ■ 02 4982 0188 ■ proshop@horizons.com.au
 ■ 5 Horizons Drive, Salamander Bay ■ www.horizons.com.au



Heavenly Tours

Heavenly Tours offers a variety of unique, professional, fully guided tours for those who wish to visit the beautiful Hunter Valley Wine Region of NSW or the many coastal highlights of Port Stephens.

We can tailor a tour to suit your taste, budget and occasion... birthdays, weddings, anniversaries, girls day out, Christmas parties, corporate events... just about anything!



Map Var ■ 0407 217 217 ■ www.heavenlytours.com.au
 ■ info@heavenlytours.com.au
 ■ www.facebook.com/HeavenlyTours.NSW.Australia.com.au

d'Albora

NELSON BAY FORESHORE



your everyday playground

RESTAURANTS • FUNCTIONS • RETAIL
BOATYARD • MARINA

d'Albora Marinas Nelson Bay • 6 Teramby Rd, Nelson Bay • 02 4984 1333

www.dalboramarinas.com.au

Map 2 O8

Irukandji Shark & Ray Encounters

SCARED OF SHARKS? Discover a whole new world at the most amazing interactive aquarium in Australia. Renowned for its education programs and conservation efforts, Irukandji is an incredible adventure not to be missed.

Massive news this year... **IRUKANDJI IS MOVING!** The new location on Nelson Bay Road in Anna Bay will see new indoor and outdoor lagoons with natural habitat and snorkeling! Check the website for the current Irukandji address and updated news on the move.

Home of SEA SHELTER, Irukandji is sharing the land to build an ever so important marine-life hospital, rescue and rehabilitation centre focusing on Sharks, Rays, Fish, Sea Turtles, Sea Snakes and more...



Map 2 F14 ■ 02 4982 2476 ■ 686 Marsh Rd, Bobs Farm - moving to 3 Jessie Road, Anna Bay in March 2020
■ www.sharkencounters.com.au ■ info@sharkencounters.com.au ■ www.facebook.com/sharkencounters

Toboggan Hill Park

All Weather Family Fun!

- 1km Toboggan Track
- Indoor Rock-Climbing
- 'Hot' Ice-Skating
- 19 Hole Mini-Golf
- Jumping Castles
- Merry-go-Round
- Remote-controlled Cars & Boats
- Arcade Games
- Kiddy Karz
- SplashDown
- Tractor Train
- Giant Maze
- Plaster Model Painting
- Picnic Areas
- BBQ Hire
- Kiosk
- Birthday Parties
- Corporate & Group Bookings

Summer - open 7 Days from 10am

Winter - open Wednesday to Sunday from 10am

Open 7 days in school holidays



Map 2 N10 ■ 02 4984 1022 ■ 16 Aquatic Close, Nelson Bay ■ www.tobogganhillpark.com ■ www.facebook.com/TobogganHillPark



Go-Karts-Go

Come and join us for a fun and exciting drive in our new Double Karts (ages 5 and up must be accompanied by an adult), new Junior (ages 8 and up, must be over 130cm) new Senior, Rimo-Schumacher Go Karts, all from Europe.

Race up to 12 Karts on our 400m track with full lap timing.

Open 7 days 9am - 5pm



Map 2 G13 ■ Cnr Marsh Rd & Nelson Bay Rd, Bobs Farm
■ 02 4981 9444 ■ www.gokartsgo.com.au/nelson-bay



Medowie Macadamia Farm Gift Shop & Cafe

Family owned and operated for 20 years. Offering all day breakfast and lunch from 8am to 3pm daily. A.C comfort and Kids play area. Shop is open 7 days, 8am to 5pm (except public holidays). Great farm grown produce available to eat in or take away.



Map 1 J10 ■ 02 4982 8888 ■ 672 Medowie Rd, Medowie
■ sales@medowiemacadamias.com.au
■ www.medowiemacadamias.com.au

Oakvale Wildlife Park

Oakvale Wildlife Park is set on 25 acres of natural bushland, and is home to Australian native, domestic farm and exotic animals.

All guests are encouraged to embrace the opportunity to interact with the animals as they roam freely around the park.

Oakvale's Splash Bay consists of water cannons, spray tunnels and super soaker bucket. Splash Bay is located within the grounds of Oakvale and is included in your general admission price.

Come and join us on a wild adventure!

Open every day of the year

10.00am - 5.00pm

(except Christmas and ANZAC Day)



Map 2 A16 ■ 02 4982 6222 ■ 3 Oakvale Drive, Salt Ash ■ info@oakvalewildlife.com.au
■ www.oakvalewildlife.com.au ■ Instagram: @oakvalewildlifepark

Nelson Bay Golf Club

Visit our unique 27-hole championship golf course, voted NSW Country Golf Club of the Year and Port Stephens Club of the Year 2018 & 2019, for a range of activities for all ages. Ranked in the top 50 courses in Australia for rounds costing under \$50, enjoy great value and a great experience for all golfers. Just 30 minutes from Newcastle Airport.

On the skirt of the national park and only a short walk from the Nelson Bay CBD we are the ideal destination for your next short break, family holiday, corporate golf day, social golf group destination, wedding or conference.

From kangaroo tours to our kids playroom, we also have a purpose-built function centre, main bar, sports bar, TAB facilities, cafe/lounge area and Bluewater Grill Restaurant, balconies all with stunning 180 degree views of the course and headlands.

Looking for the perfect wedding venue? We have an outdoor ceremony site on the course and our function room can seat up to 160 people.



Map 2 P10 ■ 02 4981 1132 ■ Dowling Street, Nelson Bay
reception@nelsonbaygolf.com.au ■ www.nelsonbaygolf.com



Fighter World

Where history meets high tech - Fighter World is dedicated to preserving Australia's proud fighter aircraft aviation heritage

Located at Newcastle Airport adjacent to the RAAF Base, Fighter World is a family friendly, totally hands on experience. You can also enjoy the warm welcome, great food and friendly atmosphere of the Fighter Beans Café.

- Open 10am to 4pm every day (except Christmas Day)
- Free parking and Wi-Fi
- Be inspired by some of Australia's most famous aircraft including the iconic F-111
- Sit in a real Jet Fighter
- Enjoy all the noise and activity of an operational Air Force Base, follow the action via live audio feed from Air Traffic Control
- Friendly guides to enhance your experience.



Map 1 J12 ■ 02 4965 1810 ■ 49 Medowie Rd Williamtown
admin@fighterworld.com.au ■ www.fighterworld.com.au

Sacred Tree Markets

Artisan markets featuring street food, producers & live entertainment. Run seasonally throughout the year to meet consumer demand.



Map 2 O8 ■ Nelson Bay Foreshore, Victoria Road, Nelson Bay
info@sacredtreemarkets.com.au ■ www.sacredtreemarkets.com.au



Port Stephens Community Arts Centre

Free entry, open seven days a week 10am – 4pm. Weekend Garden Café. We promote and encourage the development of Arts and Crafts. Our Gallery showcases and sells members unique hand crafted items. Providing an environment where members express their creativity through group support and friendship, to maximise their potential.



Map 2 P8 ■ 02 4981 3604 ■ office@artscentrenelsonbay.org.au
■ Cultural Place, Nelson Bay ■ www.artscentrenelsonbay.org.au

Hellfire Paintball

Experience adrenaline pumping excitement and hours of fun with awesome games.

Cut loose with us for your next special occasion.

Age 12yrs and over.



Map 2 B16 ■ 0412 403 342 ■ 10 Janet Parade, Salt Ash
hellfirepaintball@bigpond.com ■ Facebook: Hellfire Paintball

The Shark and Ray Ranch

Train a shark and ray, or become an octopus rancher. Markets are held every weekend and school holidays. One unique attraction.



Map 2 F14 ■ 0429 999 127 ■ 686 Marsh Road, Bobs Farm
rec@sharkrancher.com ■ www.sharkrancher.com



Book today at
portstephens.org.au



Stay Port Stephens

We manage a small number of very carefully curated luxury holiday homes in stunning locations in Port Stephens. You can expect the finest individual attention from passionate professionals experienced in matching people with their perfect holiday home. We're a bit fussy about the properties we manage so they have to tick a lot of boxes to meet our standards... quality towels and white bed linen, free Wi-Fi, coffee pod machine, quality furnishings and all set in idyllic locations. Our properties include all or most of the following features:

- Pool
- Air-conditioning
- Fireplace
- Waterfront position
- Views
- Up to 12 guests
- Spa
- Home cinema

Visit our website to view our luxury homes and book with confidence!
Luxury Family Holidays... a place to make memories.



Map Var ■ 0409 121 049 ■ info@stayportstephens.com.au
■ www.stayportstephens.com.au ■ www.facebook.com/stayportstephens.com.au

Ingenia Holidays

Soldiers Point

With a wide range of holiday cabins, camping and caravan sites, this park has so much to offer all holiday makers!

Situated on a peninsula on the southern shores of Port Stephens, Ingenia Holidays Soldiers Point is surrounded by absolute waterfront and offers an array of beaches, waterways and bushland.

Sit back and relax in the beautiful tropical gardens or by the swimming pool whilst the children enjoy the facilities!



Map 2 K8 ■ 02 4058 4491 ■ 122 Soldiers Point Road, Soldiers Point ■ soldierspoint@ingeniaholidays.com.au

One Mile Beach

Set amongst 15 acres of beautiful subtropical gardens with a range of facilities to ensure your stay is both fun and memorable, our holiday park is located on absolute beachfront.

Whether you're camping, caravanning or enjoying the deluxe cabins and villa accommodation, at Ingenia Holidays One Mile Beach you'll find a multitude of fun activities to enjoy!

Visit our website at

ingeniaholidays.com.au  **Ingenia Holidays**



Map 2 N14 ■ 02 4062 8744 ■ 426 Gan Gan Road, One Mile ■ onemilebeach@ingeniaholidays.com.au

Reflections Holiday Parks

Hawks Nest and Jimmys Beach

Reflections Holiday Parks Hawks Nest and Jimmys Beach are two spectacular holiday parks just north of Port Stephens on the mid-north coast. Both parks are popular spots for that idyllic beach getaway. Endless pristine beaches are perfect for some sandy 4WD-ing, and water enthusiasts from surfers to fisherfolk will truly be in their element.

Offering a range of accommodation from caravan and camping sites to cabins and beach tents, you're sure to find something that suits you perfectly. Plus, both parks are dog-friendly so your furry friends don't have to miss out.



Map 2 R4 ■ 02 4997 0239 (Hawks Nest) 02 4997 0466 (Jimmys Beach) ■ hawksnest@reflectionsoliday.com.au
■ jimmysbeach@reflectionsoliday.com.au ■ Booner Street, Hawks Nest and Coorilla Street, Jimmys Beach
■ www.reflectionsolidayparks.com.au ■ www.facebook.com/reflectionsolidayparks



Thou Walla Sunset Retreat | Map 2 J6



Fingal Bay Holiday Park | Map 2 Q10



Shoal Bay Holiday Park | Map 2 Q8



Halifax Holiday Park | Map 2 P8



Port Stephens Koala Sanctuary - opening early 2020 | Map 2 N13

Port Stephens Beachside Holiday Parks

With five, award winning, resort-style parks to choose from - all in spectacular beachside locations on the Tomaree Peninsula - you're sure to find the perfect family holiday destination. Choose the accommodation to suit your style and budget - from powered sites and glamping tents... to luxury villas and family-friendly cabins - all just minutes from pristine beaches.

Ask us about the brand new Port Stephens Koala Sanctuary, opening in early 2020, that will offer visitors unobstructed views of koalas in their natural habitat via a unique treetop canopy boardwalk experience as well as the opportunity to stay overnight in a deluxe glamping tent.



■ 02 4988 0990 ■ www.beachsideholidays.com.au ■ www.portstephenskoalas Sanctuary.com.au



Port Stephens Accommodation

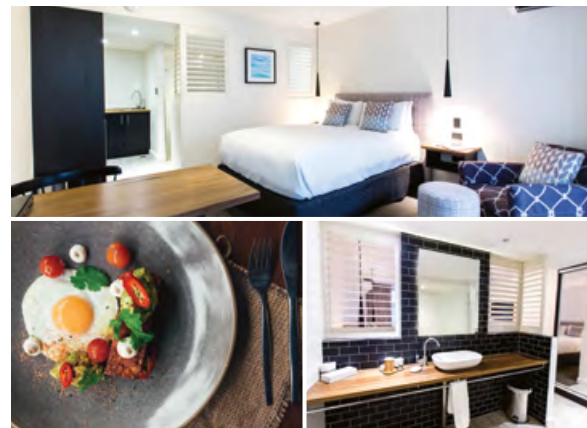
Stay with us: List with us

- Port Stephens largest selection of holiday rentals
- Studio apartments through to six bedroom houses. Waterfront, water views, close to the water
- Short stays, holidays, groups, corporate stays - all welcome

Book online... we've got the place for you!



Map 2 O8 ■ 02 4981 1577 ■ 19 Stockton Street, Nelson Bay
 ■ www.portstephensaccommodation.com
 ■ www.facebook.com/portstephensaccommodation



Hotel Nelson

Hotel Nelson has recently undergone a major facelift, and now offers Nelson Bay's premier accommodation. Walk to everything that makes the Bay great - beaches, shops, cafés and parks.

Hotel Nelson is also home to The Little Nel cafe, a favourite of the local residents of Nelson Bay, serving barista made Suspension espresso, plus a breakfast menu that is creative and unique. Try the Sambal Chilli Pave, the now famous Pea and Zucchini Fritters or just perfectly cooked eggs with crisp streaky bacon.

- FREE Wi-Fi on the NBN
- Fully heated pool
- Gym, steam room and outdoor activity area

Hotel Nelson.

Map 2 O8 ■ 02 4916 4600 ■ hello@hotelnelson.com.au
 ■ 3-7 Government Road, Nelson Bay
 ■ www.hotelnelson.com.au

Mantra Nelson Bay

★★★★☆ self contained apartments in the heart of Nelson Bay

Walking distance to shops, golf club and marina.

2 and 3 bedroom apartments and 3 bedroom penthouses, perfect for families and groups.

All apartments feature:

- Separate bedrooms
- Open plan living
- Fully self contained kitchens
- Air-conditioning
- Private balconies/courtyards
- Laundry facilities

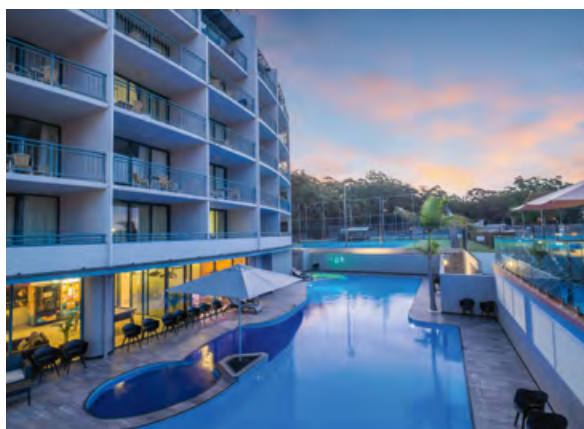
Resort features:

- 25m solar heated lagoon pool
- Gas heated spa
- Children's water fountain play area
- Electric BBQs
- Lift access to all floor levels
- Secure undercover parking

mantra
Nelson Bay



Map 2 O9 ■ 02 4916 4777 ■ 1A Tomaree Street, Nelson Bay ■ enquiries@aquaresort.com.au
 ■ www.mantraaqua.com.au ■ www.facebook.com/mantraaquanelsonbay



The Landmark Nelson Bay

Relax in a modern self-contained apartment with your own private balcony, overlooking the beautiful blue waters of Port Stephens, centrally located in the heart of Nelson Bay. Ideal location with the Bowling Club, Golf Club and Tennis Courts surrounding the resort.

- Air-conditioned rooms, Foxtel and Wi-Fi.
- Heated pool with spa and pool deck, steam room, games room and on-site restaurant.
- Excellent golf, wedding, conference and function packages.



Map 2 P9 ■ 02 4984 4633 ■ 61a Dowling Street, Nelson Bay
 ■ res@landmarknelsonbay.com.au
 ■ www.landmarknelsonbay.com.au
 ■ www.facebook.com/TheLandmarkResortNelsonBay



Marty's @ Little Beach

...a little slice of heaven

Marty's @ Little Beach is self-contained accommodation quietly nestled between two of Port Stephens' most idyllic beaches. It's just a two minute stroll in either direction to find your feet in the soft white sands of postcard-perfect Shoal Bay Beach (superb sunrises) or stunning Little Beach (sublime sunsets).

It's the little things that count at Marty's... a friendlier welcome, some helpful advice and just a little extra care. Discover Marty's... a little slice of heaven - without costing the earth!

marty's
@LITTLE BEACH

Map 2 P8 ■ 02 4984 9100 ■ enquiries@martys.net.au
 ■ Corner Gowrie Avenue and Intrepid Close, Nelson Bay
 ■ www.martys.net.au ■ Instagram: @martysatlittlebeach
 ■ www.facebook.com/MartysNelsonBay

The Anchorage Port Stephens Hotel & Spa

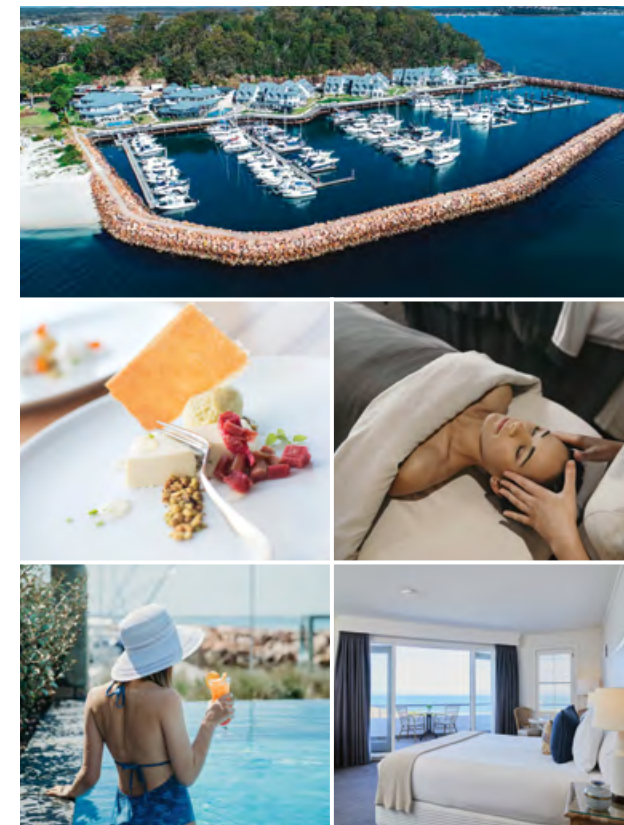
Where luxury meets the sea...

Breezy waterfront style at its finest, The Anchorage offers luxurious accommodation - from spacious rooms to mezzanine-style loft suites - along with world-class Spa Lucca, heated family and adult exclusive pools, Moby's whisky bar and two decadent dining options, The Galley Kitchen and The Wild Herring, which was recently named "Best Seafood Restaurant - Regional NSW".

Overlooking what is arguably one of the world's most beautiful ports, this idyllic, Hamptons-style resort is a haven of five-star excellence.

We welcome both visitors and guests to enjoy our waterfront eateries, bar and sublime day spa facilities and recommend booking early.

THE
ANCHORAGE
HOTEL | SPA



Map 2 M8 ■ 02 4984 2555 ■ Corlette Point Road, Corlette ■ info@anchorageportstephens.com.au
 ■ www.anchorageportstephens.com.au ■ www.facebook.com/AnchoragePortStephens
 ■ Instagram: @anchorageportstephens



The Oasis One Mile Beach

The Oasis at One Mile Beach has nine self-contained cabins and is pet friendly. One Mile Beach is only 6 minutes walk.

Perfectly suited for couples, families, groups and conferences.

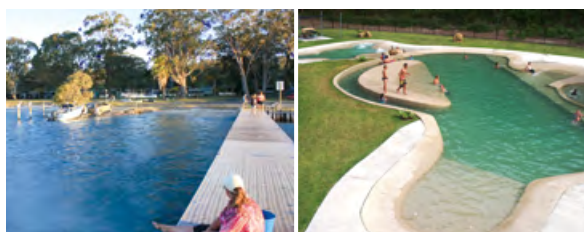
The Wellness Centre Port Stephens is located within The Oasis.

Our facility provides a tranquil and safe environment for visitors to refresh, recharge and reconnect with a range of holistic services and retreats.

A place to renew. A place to be you!



Map 2 M14 ■ 02 4982 2801 ■ 5 Koala Place, Boat Harbour
 ■ info@theoasisonemile.com.au
 ■ www.theoasisonemile.com.au
 ■ www.facebook.com/theoasisonemile



Island Leisure Village

Have a great family holiday at the Island, enjoy one of the best fishing spots in Port Stephens, stroll along the sandy beach, watch the dolphins swim by from our jetty and boat ramp, or go for a bush walk.

Relax in our Island Lagoon Pools, with rapids, sheltered kids wading and bubble pools, surrounded by landscaped picnic areas.

For more information and photos visit our website.



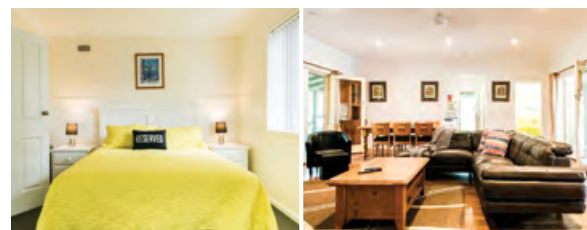
Map 2 I11 ■ 02 4982 1207 ■ stay@theisland.com.au
 ■ Fenninghams Island Rd, Anna Bay ■ www.theisland.com.au

Shoal Bay Riggers

- 5 bedroom holiday house with private pool
- Accommodates up to 10 guests
- Spacious, bright & modern living
- Short walk to Shoal Bay beach and village



Map 2 O9 ■ 0417 381 071 ■ www.shoalbayriggers.com
 ■ Facebook: Shoal Bay Riggers ■ Instagram: @shoalbayriggers



The Retreat Port Stephens

- The perfect holiday destination for Couples, Families & Groups
- A private, relaxed & peaceful setting backing onto the sand dunes
- A great range of facilities and accommodation options
- Close to all the local Tours & Attractions
- Private and Business events welcome
- Set on 4 Acres



Map 2 K14 ■ 02 4982 1244 ■ 4302 Nelson Bay Rd, Anna Bay
 ■ bookings@theretreatportstephens.com.au
 ■ www.theretreatportstephens.com.au
 ■ www.facebook.com/theretreatportstephens

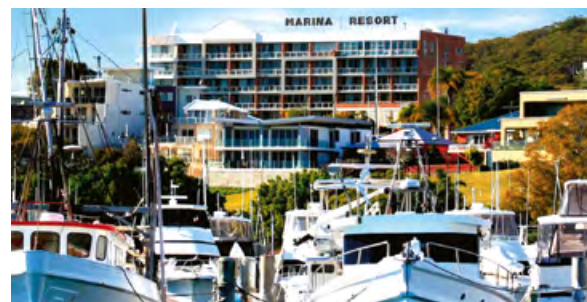
Melaleuca Surfside Backpackers

A stone's throw from the beach!

- Relax in a unique bushland setting with native wildlife ■ Dorms, cabins, camping & kombi van sites
- Dune tours ■ Bookings essential.



Map 2 M14 ■ 02 4981 9422 ■ 0427 200 950 ■ 2 Koala Pl, Boat Harbour
 ■ melaleucabackpackers@gmail.com ■ melaleucabackpackers.com.au
 ■ www.facebook.com/MelaleucaBackpackers



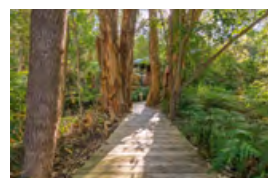
Marina Resort

- 44 hotel rooms ■ Swimming pool/spa ■ Free Wi-Fi
- A great place to stay in the heart of Nelson Bay Port Stephens
- Restaurant ■ Walk to dolphins, whales, beaches & cafés
- Fabulous water views of Nelson Bay Marina & Port Stephens Harbour
- Secure free coach & car parking onsite ■ Conference facilities

Map 2 P8 ■ 02 4981 4400 ■ 33 Magnus Street, Nelson Bay
 ■ reception@marinaresort.com.au ■ www.marinaresort.com.au
 ■ www.facebook.com/marinaresortportstephens

Wanderers Retreat

- In rainforest by the beach
- Treehouse & eco accommodation
- Walk to One Mile Beach
- Koala habitat
- Close to sand dunes & Nelson Bay



Map 2 M14 ■ 02 4982 1702 ■ 7 Koala Place, One Mile Beach
 ■ info@wanderersretreat.com ■ www.wanderersretreat.com
 ■ www.facebook.com/wanderersretreateco

Seaside Holiday Resort

Great accommodation choice located opposite beautiful Fingal Bay Beach.

Our Resort boasts 60 self-contained 2 bedroom units. All units can sleep up to six guests.

In walking distance to cafes, sports club and local supermarket.

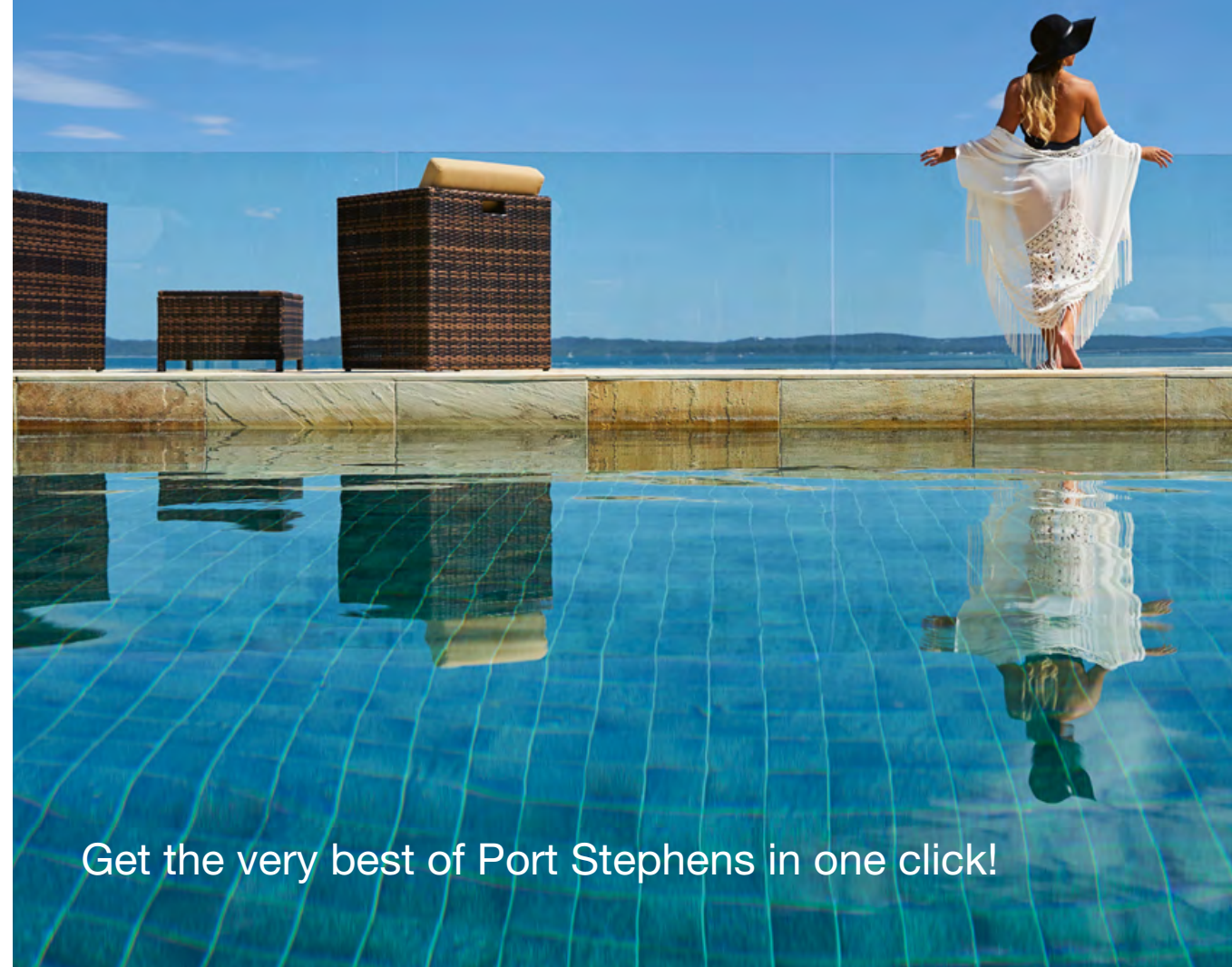
Book early as demand is high.

- All units include full kitchen and reverse cycle air conditioning
- 45 units now have private balconies and outdoor furniture
- Six accessible units
- Pool and Toddlers Pool
- Kids playground and trampolines
- Laundry facilities
- Free WIFI
- Free BBQ's



Map 2 Q10 ■ 02 4981 1533 ■ 48 Marine Drive, Fingal Bay
 ■ seasideresort@fcswc.org.au ■ www.seasideholidayresort.com.au

BOOK YOUR PORT STEPHENS STAY AT
www.portstephens.org.au



Get the very best of Port Stephens in one click!



Wests Nelson Bay

Port Stephens premier entertainment and dining destination

- Open 7 days for lunch and dinner from 9am until late
- Dining to suit all tastes - Bay Brasserie, Bay Diner & Bay Cafe
- Enjoy friendly service and icy cold beer & refreshments in one of our fully licensed bars offering modern TAB facilities.
- Live entertainment and shows
- Conference and Event facilities
- Balance Collective Gym
- Bottle shop and lotteries



Map 2 P8 ■ 02 4981 1344 ■ 88 Shoal Bay Road, Nelson Bay
 ■ nb@westnewcastle.com.au ■ www.westnewcastle.com.au
 ■ www.facebook.com/westnewcastle



Murray's Brewery and Port Stephens Winery

Murray's Craft Brewing Co shares its home with Port Stephens Winery, the region's oldest vineyard.

Visit us at Bobs Farm and try Murray's beers - there's up to 10 on tap at any one time. Taste local and regional wines, enjoy a delicious meal from the Brewery Restaurant, play a game of bocce, enjoy our entertainment and events, and learn more about craft beer by taking a Brewery Tour.



Map 1 M10 ■ 02 4982 6411 ■ info@murraysbrewingco.com.au
 ■ 3443 Nelson Bay Road, Bobs Farm
 ■ www.murraysbrewingco.com.au



Broughtons

Selecting Broughtons at the Bay for your wedding, function or event promises to be an unforgettable experience Broughton's is the friend that you trust to pull all the elements together; from the breathtaking location, delicious menu options to Hampton styling and music.

Broughton's know what to do, where to go and how to create a celebration with memories you'll cherish forever.

- Weddings
- Functions
- Events



Map 2 O8 ■ 02 4981 0865 ■ broughtonsatthebay.com.au
 ■ Level 1, d'Albora Marinas, 6 Teramby Road, Nelson Bay
 ■ www.facebook.com/broughtonsatthebay



Blueys

Nestled in Nelson Bay picturesque Marina, Blueys is the perfect place for a waterfront breakfast, lunch or dinner. What you can expect is comfy garden benches, a perfect view of the marina waterways, a great spot for a lazy afternoon with our seasonal cocktails and honest humble fresh food to power the body and the soul.

- Breakfast, lunch & dinner
- Open 7 days
- Waterfront dining
- Pet friendly



Map 2 O8 ■ 02 4006 5931 ■ www.blueysnelsonbay.com
 ■ Shop 13 E, 6 Teramby Rd, Nelson Bay
 ■ www.facebook.com/blueysnelsonbay



Mod Thai Restaurant and Noodle Bar

- Authentic Thai food
- Thai noodle available
- Lunch special under \$10 every day
- Takeaway 10% discount except school and public holidays
- Open 7 days, day and night



Map Var ■ www.modthai.com.au
 ■ Nelson Bay: 4984 4222 ■ Shop 12, 25 Stockton Street
 ■ Shoal Bay: 4981 5552 ■ 3/57 Shoal Bay Road



KFC Salamander Bay

Hosting a party or meeting?

Going to the beach or out on your boat?

KFC catering menu is designed to meet your needs.

- Conveniently located on the corner of Sandy Point Road and Bagnalls Beach Road in the Salamander Shopping Precinct
- Open from 10.30am daily



Map 2 M9 ■ 02 4981 0050
 ■ Corner Sandy Point Road and Bagnalls Beach Road, Salamander Bay



The Point

Just a short drive from Nelson Bay, The Point Restaurant offers a relaxed dining experience with breathtaking views of the stunning Soldiers Point waterways and legendary sunset. Tantalise your tastebuds with our fresh local seafood or ala carte options, or sip cocktails on the deck and watch the world go by. Whether it's dinner for two, party, function or wedding, The Point Restaurant is the perfect setting.

- Lunch & dinner
- Open 7 days
- Waterfront dining



Map 2 J6 ■ 02 4984 7111 ■ www.thepointrestaurant.com.au
 ■ Level 1, Soldiers Point Marina, Sunset Boulevard, Soldiers Point
 ■ www.facebook.com/thepointrestaurant.soldierspoint



Gill's Fish House + Bar

Perched overlooking the iconic Nelson Bay Marina, Gill's Fish House boasts simple, seasonal food from locally sourced and sustainable suppliers. The menu is influenced by fresh, seasonal ingredients from local oysters, whole fish and seafood shares to lush land produce with a fusion of traditional favs. With casual beach house décor, Gill's Fish House brings friends together over good food, good wine and good times.

- Lunch & dinner
- Open 7 days
- Waterfront dining



Map 2 O8 ■ 02 4984 4403 ■ www.gillsfishhouse.com.au
 ■ Level 1, Nelson Bay Marina, 6 Teralba Street Nelson Bay
 ■ Instagram: @gillsfishhouse



- Family friendly
- Takeaway available
- Fully licensed
- 7 days lunch & dinner



- Shop 19, upstairs d'Albora Marinas, Nelson Bay
- www.thewoodoven.com.au

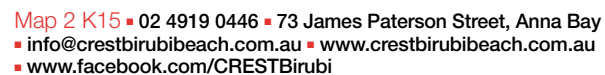
Taj Tandoori Indian Restaurant

- Air cond. ■ Fully licensed
- BYO wine only ■ Kids menu
- Dine-in & Takeaway
- Open 7 nights 5.30pm - late



Crest Birubi Beach

- The sun soaked Crest Birubi Beach is open 7 days a week for breakfast and lunch
- Absolute beachfront boasting spectacular views of Birubi Beach and beyond



Inner Light Tea Rooms

Come for the view.
Stay for the food.

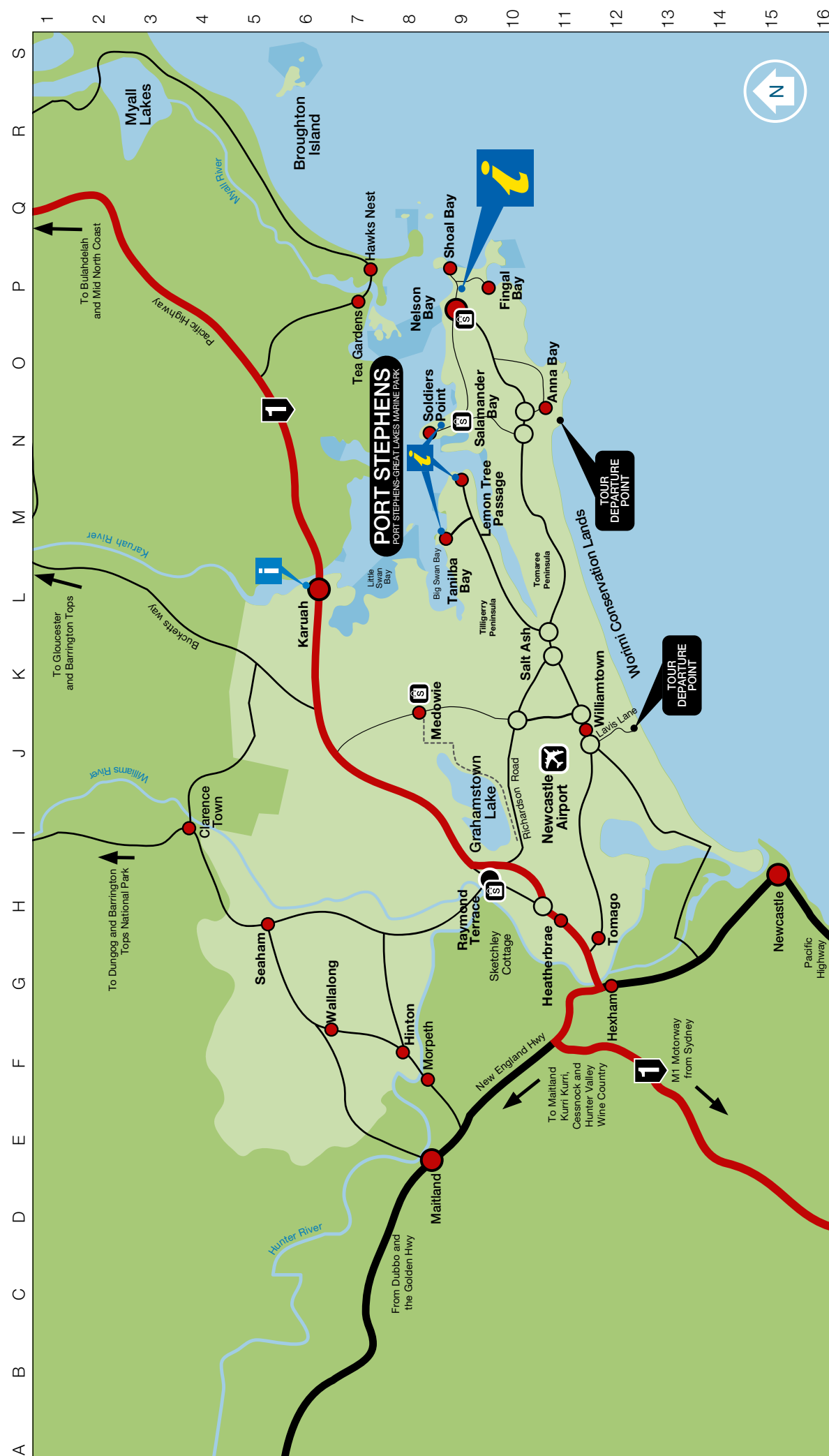
- Serving breakfast, lunch, morning and afternoon tea
- Open 9am to 4pm daily



- innerlighttearooms@gmail.com ▪ www.innerlighttearooms.com
- Facebook: InnerLightTearooms ▪ Instagram: @innerlighttearooms

L'il Buddha Asian Cuisine

- Dine-in or Takeaway
- Open 7 days for lunch & dinner
- Family friendly ■ Lunch Specials
- All dietary requirements are happily catered for



Marine Parks Sanctuary Zones

Copies of the Marine Parks map are available from the Port Stephens Visitor Information Centre.



Visitor Information Centre
or Satellite Information Centre



KEY					

MAP REFERENCES

To help you locate every hidden gem in Port Stephens we have included a Map Reference on each advertisement. The reference includes the Map number and the

coordinates for each place! If you're still directionally challenged... just visit our friendly staff at the Visitor Information Centre or call 1800 808 900.

DIRECTORY

The people. The places. Contacts & locations

ACCOMMODATION

RESORTS, HOTELS & MOTELS

Admiral Nelson Motor Inn Nelson Bay	02 4984 9902	
Anchorage Port Stephens Corlette	02 4984 2555	pg 45 Map 2 M8
Bannisters Port Stephens Soldiers Point	02 4919 3800	
Central Motel Nelson Bay	02 4981 3393	
Colonial Terrace Motor Inn Raymond Terrace	02 4987 2244	
Hotel Nelson Nelson Bay	02 4916 4600	pg 44 Map 2 O8
Mantra Nelson Bay Nelson Bay	02 4916 4777	pg 45 Map 2 O9
Marina Resort Nelson Bay	02 4981 4400	pg 46 Map 2 P8
Mercure Newcastle Airport Williamtown	02 4033 8900	
Motto Farm Motel Heatherbrae	02 4987 1211	
Nelson Towers Motel Nelson Bay	02 4984 1000	
Oaks Lure Apartments Nelson Bay	02 4980 4888	
Oaks Pacific Blue Resort Salamander Bay	02 4916 1200	
Ramada Resort Shoal Bay Shoal Bay	02 4984 8100	
Riverside Motel Karuah	02 4987 0007	
The Landmark Nelson Bay Nelson Bay	02 4984 4633	pg 44 Map 2 P9
The Oasis at One Mile Beach One Mile	02 4982 2801	pg 46 Map 2 M14

HOLIDAY PARKS - CABINS - COTTAGES

Bays Holiday Park Anna Bay	02 4982 1438
Big4 Karuah Jetty Karuah	02 4997 5520

Big4 Koala Shores Port Stephens Holiday Park Lemon Tree Passage	02 4982 4401
Birubi Beach Holiday Park Anna Bay	02 4982 1263
Emerald Tiki Village Caravan Park Anna Bay	02 4982 1422
Fingal Bay Holiday Park Fingal Bay	02 4988 0990 pg 43 Map 2 Q10
Halifax Holiday Park Nelson Bay	02 4988 0990 pg 43 Map 2 P8
Ingenia Holidays One Mile Beach One Mile	02 4062 8744 pg 42 Map 2 N14
Ingenia Holidays Soldiers Point Soldiers Point	02 4058 4491 pg 42 Map 2 K8
Island Leisure Village Bobs Farm	02 4982 1207 pg 46 Map 2 I11
Middle Rock Holiday Resort & Cabins One Mile	02 4982 1162
Port Stephens Koala Sanctuary One Mile	02 4988 0990 pg 43 Map 2 N13
Reflections Holiday Park Jimmys Beach Jimmys Beach	02 4997 0466 pg 42 Map 2 R4
Reflections Holiday Park Hawks Nest Hawks Nest	02 4997 0239 pg 42 Map 2 R4
Shoal Bay Holiday Park Shoal Bay	02 4988 0990 pg 43 Map 2 Q8
Thou Walla Sunset Retreat Soldiers Point	02 4988 0990 pg 43 Map 2 J6
Wanderers Retreat Boat Harbour	02 4982 1702 pg 46 Map 2 M14

SELF-CONTAINED ACCOMMODATION

2 Dogs Cottages Lemon Tree Passage	0416 268 679
Bay Escapes Fingal Bay	02 4984 2616
Beaches Serviced Apartments Nelson Bay	02 4984 3255
Cote D Azur Resort Nelson Bay	02 4984 9595

Marty's @ Little Beach Nelson Bay	02 4984 9100 pg 44 Map 2 P8
Nelson Bay Breeze Apartments Nelson Bay	02 4984 3199
Seaside Holiday Resort Fingal Bay	02 4981 1533 pg 47 Map 2 Q10
Shoal Bay Riggers Shoal Bay	0417 381 071 pg 46 Map 2 O9
The Retreat Port Stephens Anna Bay	02 4982 1244 pg 46 Map 2 K14
Triview Unit 14 Penthouse Nelson Bay	0428 954 112

HOLIDAY LETTING & REAL ESTATES

By the Beach Getaways Boat Harbour	0407 616 921
Holidays By The Bay Nelson Bay	02 4008 5010
LJ Hooker Nelson Bay Nelson Bay	02 4984 2400
Port Stephens Accommodation Nelson Bay	02 4981 1577 pg 44 Map 2 O8
Port Stephens Luxury Apartments Salamander Bay	1300 679 559
Stay Port Stephens Nelson Bay	0409 121 049 pg 41 Map Var
Tomaree Linen Hire Nelson Bay	02 4984 4451

BED & BREAKFAST

Nelson Bay Bed & Breakfast Nelson Bay	02 4984 3655
Peaceful Palms B&B Raymond Terrace	02 4987 7576
Salamander Beach Accommodation Salamander Bay	0467 433 680

BACKPACKERS

Melaleuca Surfside Backpackers Boat Harbour	02 4981 9422 pg 46 Map 2 M14
Samurai Beach Bungalows Port Stephens YHA Anna Bay	02 4982 1921

DOLPHIN & WHALE WATCHING

AquaMarine Adventures Port Stephens Nelson Bay	02 4919 0469
Blue Water Sailing Corlette	0448 111 331 pg 32 Map 2 M8
Dolphin Swim Australia Nelson Bay	1300 721 358 pg 35 Map 2 O8
Imagine Cruises Nelson Bay	02 4984 9000 pg 35 Map 2 O8
Koala Ferries Various	0401 424 738
Moonshadow-TQC Nelson Bay	02 4984 9388 pg 33 Map 2 O8
Tea Gardens Ferry Service Nelson Bay	0412 682 117 pg 33 Map 2 O8

SAND DUNE ACTIVITIES

4WD Tag-Along & Passenger Tours Anna Bay	0411 296 288 pg 32 Map 2 K15
4WD Tours R Us Anna Bay	02 4981 9352 pg 30 Map 2 K15
Oakfield Ranch Camel Rides Anna Bay	0429 664 172 pg 32 Map 2 K15
Port Stephens 4WD Tours Anna Bay	02 4984 4760 pg 30 Map 2 K15
Quad Bike King Williamtown	02 4965 0007 pg 31 Map 1 K11
Sahara Trails Horse Riding Anna Bay	02 4981 9077 pg 32 Map 2 K13
Sand Dune Adventures Williamtown	02 4033 8808 pg 31 Map 1 K11
Sand Dune Safaris Anna Bay	0425 213 096 pg 30 Map 2 K15

WATER ACTIVITIES

Boab Boat Hire Port Stephens Nelson Bay	1300 002 622
Feet First Dive Nelson Bay	02 4984 2092
Lazy Paddles Tea Gardens	0412 832 220 pg 32 Map 2 Q3
Lets Go Adventures Nelson Bay	02 4981 4331 pg 32 Map 2 O8
Nelson Bay Boat Hire Nelson Bay	0419 631 988
Port Stephens Beach Fishing Safaris Various	0414 923 257
Port Stephens Paddlesports Shoal Bay	0405 033 518 pg 35 Map 2 O8
Port Stephens Surf School One Mile	0411 419 576
Shoal Bay SUP Shoal Bay	0428 604 460 pg 32 Map 2 R8
Soldiers Point Marina Nelson bay	02 4982 7445

ATTRACTIONS & TOURS

Australian Reptile Park Somersby	02 4340 1022
Bay Scoot and Wheels Nelson Bay	0401 334 501
Boomerang Bikes Nelson Bay	0414 848 284
D'ALBORA Marinas Nelson Bay	02 4984 1333 pg 37 Map 2 O8
David Grahams Golf Complex Anna Bay	02 4982 1960
Escape Trekking Adventures Various	0422 372 273
Fighter World Williamtown	02 4965 1810 pg 40 Map 1 J12
Go Karts Go Bobs Farm	02 4981 9444 pg 38 Map 2 G13
Heavenly Tours Various	0407 217 217 pg 36 Map Var
Heliservices Newcastle & Hunter Newcastle	02 4962 5188

Hellfire Paintball Salt Ash	0412 403 342	pg 40 Map 2 B16
Hunter Region Botanic Gardens Heatherbrae	02 4987 1655	
Irukandji Shark & Ray Encounters Bobs Farm, moving to Anna Bay March 2020	02 4982 2476	pg 38 Map 2 F14
Maitland Regional Art Gallery Maitland	02 4934 9859	
Medowie Macadamias Medowie	02 4982 8888	pg 38 Map 1 J10
Mustang Memories Corlette	0418 458 275	
Nelson Bay Cinema Nelson Bay	02 4981 2320	
Nelson Head Inner Lighthouse Cottage Nelson Bay	02 4981 3585	
Oakvale Wildlife Park Salt Ash	02 4982 6222	pg 39 Map 2 A16
Port Stephens Community Arts Centre Nelson Bay	02 4981 3604	pg 40 Map 2 P8
Port Stephens Shell Museum Corlette	02 4981 1428	
Sacred Tree Markets Nelson Bay		pg 40 Map 2 O8
Shoal Bay Bike Hire Shoal Bay	0437 414 121	
The Shark and Ray Ranch Bobs Farm	0429 999 127	pg 40 Map 2 F14
Tilligerry Habitat Tanilba Bay	02 4984 5677	
Toboggan Hill Park Nelson Bay	02 4984 1022	pg 38 Map 2 N10
Tomaree Aquatic Centre Salamander Bay	02 4981 2848	
Tomaree Coastal Adventures Shoal Bay	0477 063 646	
Trike Tours Various	0416 294 299	pg 36 Map Var

RESTAURANT & CAFÉS

Broughtons at the Bay Nelson Bay	02 4981 0865	pg 49 Map 2 O8
Blueys Nelson Bay Nelson Bay	02 4006 5931	pg 49 Map 2 O8
Cookabarra Restaurant Bobs Farm	02 4982 6740	
Crest Birubi Beach Anna Bay	02 4919 0446	pg 50 Map 2 K15
Dolphin House Nelson Bay	0410 538 819	
Evviva Cafe & Bar Nelson Bay	02 4984 2211	
Gills Fish House & Bar Nelson Bay	02 4984 4403	pg 49 Map 2 O8
Inner Light Tea Rooms Nelson Bay	02 4984 2505	pg 50 Map 2 Q7
KFC Salamander Bay	02 4981 0050	pg 48 Map 2 M9
Lil Buddha Salamander Bay	02 4982 0286	pg 50 Map 2 L10
Little Beach Boathouse Nelson Bay	02 4984 9420	
McCauley's Bottleshop Salamander Bay	02 4982 7211	

Mod Thai Food and Noodle Bar Nelson Bay	02 4984 4222	pg 48 Map Var
Murray's Brewery & Port Stephens Winery Bobs Farm	02 4982 6411	pg 48 Map 1 M10
Saltwater Restaurant Fingal Bay	02 4024 2650	
Sanook Thai Restaurant Corlette	02 4984 3363	
Seabreeze Hotel Nelson Bay	02 4981 1511	
Shoal Bay Country Club Shoal Bay	02 4981 1555	
Sri Malaysia Restaurant Nelson Bay	02 4984 1233	
Taj Tandoori Indian Restaurant Nelson Bay	02 4981 5521	pg 50 Map 2 O8
The Deck Cafe Restaurant & Bar Soldiers Point	02 4919 1502	
The Only Place Indian Restaurant Nelson Bay	02 4984 4414	
The Poyer's Lemon Tree Passage	02 4984 5827	
The Point Restaurant Soldiers Point	02 4984 7111	pg 49 Map 2 J6
The Wood Oven Nelson Bay	02 4984 4800	pg 50 Map 2 O8
Valhalla Restaurant Bar Bobs Farm	02 4982 1702	

LOCAL PRODUCERS

Holberts Oyster Supplies Salamander Bay	02 4982 7234	
Nelson Bay Fish Market Nelson Bay	02 4981 3330	
Nelson Bay Fishermen's Wharf Seafoods Nelson Bay	02 4984 3330	

CLUBS & ORGANISATIONS

Econetwork Nelson Bay	0423 024 819	
Fingal Bay Bowls, Sports & Rec Club Fingal Bay	02 4984 1244	
Horizons Golf Resort Salamander Bay	02 4982 0188	pg 36 Map 2 L10
Muree Golf Club Raymond Terrace	02 4987 2142	
Nelson Bay Bowling & Recreation Club Nelson Bay	02 4981 1272	
Nelson Bay Golf Club Nelson Bay	02 4981 1132	pg 39 Map 2 P10
Nelson Bay Tennis Club Nelson Bay	02 4981 4090	
Newcastle and Port Stephens Game Fish Club Shoal Bay	02 4981 1459	
Pacific Dunes Golf Club Medowie	02 4916 0500	
Rock n Roll Club Nelson Bay	0419 017 617	
Rotary Club of Nelson Bay Nelson Bay	0438 295 246	
Soldiers Point Bowling Club Soldiers Point	02 4982 7173	

Tanilba Bay Golf Club Tanilba Bay	02 4982 3215	
Tilligerry RSL Sports Club Tanilba Bay	02 4982 3889	
Tomaree Business Chamber Nelson Bay	0455 844 751	
Wests Nelson Bay Nelson Bay	02 4981 1344	pg 48 Map 2 P8

SHOPPING & RETAIL

Cameron Stewarts Nelson Bay	02 4984 4577	
Raymond Terrace Market Place Raymond Terrace	02 4987 7686	
Salamander Bay Square Nelson Bay	02 4982 0066	

HEALTH & BEAUTY

Arteke Salon Collective Nelson Bay	02 4984 1400	
Fresh Salon Nelson Bay	02 4984 1741	
Nelson Bay Health Foods Nelson Bay	02 4981 2030	
New Leaf Cosmetic Nelson Bay	02 4981 2314	
Pizazz Boutiques Nelson Bay	02 4984 4177	
Wellness Centre Port Stephens One Mile	02 4982 2801	

TRANSPORT

BJM Private Transport Port Stephens	0408 412 860	
Fly Pelican Williamtown	02 4965 0111	
Goodies Shuttle Service Various	0415 312 115	
Newcastle Airport Williamtown	02 4928 9800	
Port Stephens Coaches Anna Bay	02 4982 2940	
Sandy Feet Tours Tea Gardens	0426 101 851	

NATIONAL PARKS & MARINE PARKS

NSW National Parks and Wildlife Service Nelson Bay	02 4984 8200	
Port Stephens Great Lakes Marine Park Taylors Beach	02 4916 3970	pg 34 Map Var
Worimi Conservation Lands Anna Bay	02 4984 8200	

SERVICES

Addison Partners Nelson Bay	02 4919 5500	
Bay FM Port Stephens Nelson Bay	02 4984 4673	
Brochure Express Nelson Bay	0427 404 009	
Cactus Creative Lambton	02 4957 7199	

Colorfast Salamander Bay	02 4982 0026	
Defining Moments by Anouk Medowie	0432 243 364	
I Do Bespoke Ceremonies Pokolbin	0411 556 079	
Leah Anderson and Associates Taylors Beach	0427 463 372	
Nelson Bay Locksmith Nelson Bay	02 4981 3428	
Paradise Signs Salamander Bay	02 4984 6962	
Pixello Creative Corlette	0404 146 659	
Plant Trade Nursery Bobs Farm	02 4982 5095	
Port Stephens Examiner Raymond Terrace	02 4983 8400	
Port Stephens Self Storage Taylors Beach	02 4984 2000	
Port Stephens Wedding & Event Childcare Service Nelson Bay	0427 116 453	
Riot FM 87.6 Nelson Bay	02 4984 4673	
R Marine Nelson Bay	02 4984 2355	
Salamander Bay Recycling Salamander Bay	02 4984 6244	
Salamander Village Florist Salamander Bay	02 4984 7222	
Spirited - A Creative Play Café Taylors Beach	02 4982 2065	
Talk Agency Tuggerah	02 4384 2577	
Tropical Plant Rentals Anna Bay	1800 631 365	
Wedding Road Various	0410 474 135	
Westbury Hospitality Services Nelson Bay	0414 398 144	

MEDICAL

Nelson Plaza Clinic 29 Stockton Street, Nelson Bay	02 4981 2555	
Nelson Bay - Tomaree Community Hospital OPEN 24 HOURS Trevally Street, Nelson Bay	02 4984 0700	
Care For You At Home 1/23 Shearwater Drive, Taylors Beach	02 4981 4404	

EMERGENCY AND POLICE

CALL 000 Police, Fire, Ambulance		
Nelson Bay Police Station 16/18 Government Road, Nelson Bay	02 4981 1244	
Lemon Tree Passage Police Station 8 Cook Parade, Lemon Tree Passage	02 4982 4753	
Raymond Terrace Police Station 55/57 William Street, Raymond Terrace	02 4983 7599	
Karuah Police Station 9 Engel Avenue, Karuah	02 4997 5544	

***Var** = Various locations.

Destination Port Stephens



Produced for Destination Port Stephens
by Cactus Creative ■ 02 4957 7199 ■ www.cactuscreative.com.au

Printed in Australia by Ovato

Published January 2020.

All advertising and editorial enquiries:
Destination Port Stephens 02 4981 2964

Photography acknowledgements:
Andrew Birks @andy_birks (front cover), Jacob Bee-Gill @
changingtides__, Jenny Baxter, Stories with Mel (Melissa Cox),
4WD Tours R Us, Port Stephens Surf School, Surfing Australia,
Sacred Tree Markets, Hover UAV, Paul Foley's Lightmoods,
Lisa Skelton Photography, Karl Hoffman, Destination Port Stephens,
The Anchorage, Jason Busch, Destination NSW, Peter Kincaid
Photography and all other contributors.

Important disclaimer: Information contained in this brochure was supplied by individual operators. Therefore whilst every endeavour has been made to ensure accuracy of this information, Destination Port Stephens and its agents cannot be held responsible for any injury, loss or damage, misdescription, inadvertent errors in bookings, or any consequence through the acts of default of any company or person engaged in carrying out any of the bookings of products in this brochure.



Share your
Port Stephens
experiences
#portstephens



ACCESSIBILITY

The Port Stephens Visitor Centre can help you find appropriate accommodation, shopping and medical facilities as well as suggestions for short easy walks, fishing, swimming, sight-seeing, lookouts and adventures.

**Please contact us on info@portstephens.org.au
or phone 1800 808 900 for assistance.**

Beach Wheelchairs - available free for use, located at Fingal Bay and Little Beach, Nelson Bay. Bookings can be made direct to the following:

Fingal Bay or Halifax Holiday Park - ph: (02) 4988 0990

Fingal Bay Surf Club - ph: (02) 4981 1450

Water Wheelchair and Beach Access Ramp - Council offers a disability access ramp at Little Beach, Nelson Bay which provides access to the water via a water wheelchair. The beach boasts lovely golden sand and disability play equipment, making this a perfect spot for families to enjoy the Bay.

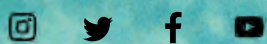
LOCAL RADIO STATIONS:

BAY FM
88.0

PORT STEPHENS FM
100.9

RIOT FM
87.6

ABC RADIO AM
1233



#PORTSTEPHENS

Snap and upload a pic of your Port Stephens experience.



Destination
Port Stephens

For Accommodation
and Tour Bookings:
phone 1800 808 900 or
visit portstephens.org.au